

### 3.3.4 PREFERRED SOLUTION

---

#### H. Supporting Documents

1. Program Refinement  
Minutes & Tours
  - a. District SPED Inclusion Model
  - b. Chapter 74 Programs
  - c. Friends of Newton Hill Meeting Minutes
  - d. Parks and Athletics Meeting Minutes
  - e. Chapter 74 Tours
    - 1) Durfee Tour
    - 2) Medford HS Tour
    - 3) NEL CPS CCA Tour

## Doherty-MSBA PDP Comment on Inclusion Model

**8) The information provided indicates that the District is in the process of moving to a “more inclusive model” of instruction (p. 97). In response to these review comments, describe the steps the District has taken/is currently taking/will take to support this shift.**

*Does the district have a policy or statement (potentially from the coordinated program review) that we could use as a response to this question?*

The mission of the Worcester Public Schools is to provide all students the opportunity to advance their scholarship with rigorous core curriculum and high quality instruction. This enables students to discover the expanse of their academic talents, shape the quality of their character, and develop the confidence to become conscientious, reflective citizens who are empowered to better our community and our world. This mission has been the forefront of Superintendent, Maureen Binienda, District Strategic Plan which outlines actions steps based on rigorous academic outcomes that promotes excellence for all students. The accountability for all WPS schools ensures student outcomes based on parent engagement given the collaboration of district and community stakeholders. The following key points of Superintendent Binienda’s strategic plan for all schools will address the alignment of the critical components of Doherty Memorial High School (DHS) inclusive initiatives:

1. **Culture of Innovation** – Embrace a culture of innovation that develops and pilots evidenced-based approaches and allocates resources to address chronic student achievement gaps and underperforming schools
2. **Academic Excellence** – Increase opportunities for students to develop critical thinking and problem solving skills and demonstrate knowledge to increase career awareness and exploration at all grade levels through integrated coursework and a tiered My Career and Academic Plan (MyCAP) given a comprehensive mentoring program, and also access to digital learning options and courses
3. **Welcoming Schools** – Increase opportunities for family engagement and participation in decision making at the school level. School Accountability plans will also address district-wide expectations as well as prioritize the development of systems that support a shared vision for social emotional growth and school climate development across the district to include leadership training on DESE’s Early Warning Indicator System (EWIS).
4. **Investing in Educators** – Provide pathways for educators to demonstrate mastery and advance in their professional development by using a recruitment and retention approach that will increase access to a highly qualified diverse teacher workforce.

5. **Technology & Operations** – Coordinate and align school administration, governance, and municipal processes to prioritize and support educational improvements for the success of all student.

Currently, WPS district initiatives embeds inclusion opportunities for students with disabilities based on key attributes of the Department of Elementary and Secondary Education Educator Effectiveness Guidebook for Inclusive Practices.

**Inclusive practice** refers to the instructional and behavioral strategies that improve academic and social-emotional outcomes for **all students**, with and without disabilities, in general education settings.

To support inclusive practice, Doherty High School will integrate tools of this *Guidebook* based on the frameworks of [Universal Design for Learning](#), [Positive Behavioral Interventions and Supports](#), and [Social and Emotional Learning](#).

Summary of District professional development trainings that have promoted diversity and inclusive practices included: Central Office Administrators, Principals, Directors, School-based Instructional Leadership Teams, Coordinators, Dept. Heads, Coaches, General and Special Education Staff, and Para-educators. To date, various district representatives have engaged in various workshops which included national experts as well as a school based teams' given a cadre of comprehensive professional development activities which included resources and targeted interventions in the following areas:

- August 2019 Presentation by Michael Fullan - Book Study Nuances
- 2019 – 20 Presentation by Dr. J. Stuart Ablon – Author of The Discipline Fix (SEL- The Collaborative Problem Solving Approach)
- 2018 -19 Presentation and book study by Peter Dewitt – School Culture & Climate: Leading with Collective Efficacy
- 2017 -18 Elizabeth City - Instructional Rounds in Education
- DESE & Cast Initiatives - UDL Framework to address the diverse needs of students to ensure access
- MTSS Tiered Academic and SEL Interventions
- Content Subject Initiatives - Office of Professional Learning
- INSTIL and District Turnaround Practices - Walkthrough Protocol and Tool, Classroom Observations and What to Look For

The vision for the new Doherty High School inclusion initiatives have been aligned to the district strategic plan given a series of comprehensive professional development trainings which are designed to promote and embrace inclusion opportunities for students with disabilities.

The Special Education Department and the District Leadership Team has outlined the following objectives and strategies to promote inclusive practices with fidelity at Doherty High School:

1. Self-Assessment of DHS current practices of Inclusion services
  - DHS will analyze the results of their needs assessment, data and school accountability plan to ensure the fidelity of specialized instruction, and inclusion opportunities, professional learning based on rigorous outcomes for students with disabilities.
    - Coordinate professional development for co-teachers to develop skills, strategies and differentiation of instruction
    - Create a school based schedule that supports common planning time
    - Increased coaching within the classroom setting to support SWD
    - On-going PLC's and professional development on related topics to strengthen the skills set of general and special education inclusion teachers
2. DHS targeted objectives and strategies are also aligned to the District Strategic Plan and Turnaround Practice Initiatives:
  - Leadership, shared responsibility and professional collaboration
    - Intentional practices for improving instruction
      - Expectations for rigorous and consistent standards-based instructional practices that will include well planned differentiation for targeted groups (EL's and SWD)
      - Promote systems of co-teaching to include common planning, PLC's, grade level meetings, focused instructional coaches, and department heads
      - PBIS and SEL Initiatives
      - Identification of teachers to promote co-teaching models and/or inclusive opportunities
      - Dual certifications for educators
  - Student – specific supports and instruction to all students
    - Analysis of assessments and common assessment data
    - Adapt curriculum tailored to the needs of individual students
    - Data to adapt and improve instructional strategies
    - Provide PLC's to support high quality evidenced based specialized instruction for SWD
    - Assure individual students' IEP goals and objectives, and accommodations are implemented with fidelity
  - School Culture and Climate - Instructional Leadership and School based Teams
    - Efficacy and Equity of all learners
    - Diversity of Learners
    - Positive Behavioral Intervention and Supports
    - EL's and WIDA standards and the intersection of SWD
    - Targeted instructional practices that promote inclusion opportunities

3. Analysis of State and District Data ( MCAS, STAR, AP, Common and Benchmark Assessments)
4. Collaborative Data Meetings ( Grade Levels, and across content subjects)
  - Accountability measures using data decision making to improve outcomes for SWD by increasing inclusion placements and reducing substantially separate placements ( DHS - Quarterly analysis of placement data points)
  - Data informed decision making when measuring and discussing a student's readiness or ability to be successful in an inclusion setting
  - Progress Monitoring Tools
  - Address Least Restrictive Environment by monitoring placement options
  - Accountability of retention and academic failure to address dropout prevention
  - Transition Planning to promote College to Career to expand post-secondary outcomes
  - Increase specialized instruction skills to include self-advocacy, literacy and executive functioning
5. Multi-disciplinary Meetings (Professional Learning Communities, Instructional Support Teams by Departments and Grade Levels) to effectively increase inclusion opportunities
6. Fiscal impact of goal setting to address scheduling, staffing needs and assignments of staff
  - Budget allocation process to identify staffing needs and classroom student / teacher ratios
  - Scheduling to ensure co-teaching and additional supports
  - Alignment and Allocation of funding to support evidence based curriculum and technology tools to address diverse learners
7. Professional development Training on topics such as; Diverse Learners, Specialized Instruction, UDL, Technology Tools etc.,
  - DESE Educator Effectiveness Guidebook for Inclusive Practices.
  - What to Look For: Classroom Observations, Lesson Plans and Instructional Rounds
  - Student Vision and Feedback
  - Specialized classrooms rubrics for entrance and exit criteria
  - Implementation of GoalBook – IEP Tools to align academic goals and objectives to CORE standards, additional tools include behavioral and social emotional interventions
8. To promote students with disabilities (SWD) to be college and career ready, Doherty High School guidance will monitor WPS Criteria for High School Grade level Assignments to ensure that SWD are on track for graduation

- Mindset shift to promote the beliefs that all students must have access to inclusion
- Increased use of technology to support student needs and promote independence in the LRE
- Increased social opportunities in the school community for SWD: speaks to a school culture that accepts SWD that promotes inclusion opportunities
- Promote family involvement and engagement in the school community

Throughout the coming years, DHS will engage in extensive professional development from the special education department, central administration team and consultants. Collectively, district leaders will engage Doherty High School staff, families and community stakeholders to work collaboratively to promote a safe school where all students have the essential skills to prepare them for college and career opportunities.

DHS Inclusion implementation plan will be developed based on a series of inquiry questions, data analysis and resources from the “Educator Effectiveness Guidebook for Inclusive Practices” as outlined given the following action steps from (Pages 167-180)

**Part 1: DHS Reflective Questions:**

- To what degree are we using our schedule to promote develop and sustain an inclusive learning culture?
- Does the master schedule support collaboration between special educators, English Learners, specialist and general educators?
- What trends, strengths and deficits are present in school-based data?
- If instructional data reflects a need for improved Tier 1 instruction in specific areas, does the master schedule address those needs by supporting targeted instruction?
- Where does school-wide data reflect the need for more intensive tiered intervention?
- Classroom analysis - What is the ideal balance of needs in a general education classroom reflecting level of needs informed by IEPs (i.e., low, moderate, high)?
- What resources, professional development and ongoing support will be needed by educators in general education classrooms with a high portion of student needs?
- Is there an expectation and/or have staff been trained and supported in how to navigate the collaborative partnerships of (co-teaching) such that clear roles and responsibilities are determined?

**Part 2: Developing a DHS Inclusive School Schedule Team Protocol** - This tool will be used to review master schedules for alignment with best practices for inclusion

- Purpose: Use the tool to leverage DHS master schedule to create, develop and sustain an inclusive learning culture
- Identify Goals ( Instructional Leadership Team)

- Develop Outcomes (priorities and considerations to support inclusive practice)

**Part 3: Inclusive Practice Tool: DHS Staff Feedback Discussion Protocol**

- DHS classroom educators will use this tool to reflect on inclusive practice of their leadership
- DHS building administrators will use this tool to self-assess their own inclusive practice
- WPS District administrators will use this tool to support inclusive practice across schools

**Part 4: DHS Effective Inclusive School Communities . . . PD Planning Guide**

<b>DHS Leadership Team</b>	<b>DHS Staff will be</b>	<b>DHS School Environment will</b>
Support teaching approaches that address the needs of diverse learners	Presenting curriculum content through multiple means and providing scaffolds and support for metacognitive processing	Be safe and respectful of all cultures and backgrounds
Creating and maintaining a master schedule that prioritizes inclusive placement of students when appropriate	Providing clear academic objectives and behavioral expectations	Support a variety of tasks and learning formats
Establishing and maintaining tiered systems of positive behavior supports	Providing options for student engagement, persistence and self-regulation	Be conducive to collaboration and group work
Engaging with stakeholders at all levels to promote and encourage a shared vision of inclusivity and differentiated supports	Use data and student response to differentiate instruction and support	Use clear and effective displays of interventions (i.e., assistive technology, resources, accommodations and prompts)
Interacting with individual students, demonstrating awareness of diverse backgrounds and academic profiles	Providing multiple options and supports to facilitate a language rich environment	Be rich with connections to student experience and interest and clearly display expectations, rules and routines
Communicating with parents and families regularly effectively, and with cultural sensitivity	Demonstrating a shared accountability for all students	Demonstrate a school-wide commitment to providing a positive social emotional culture
Providing positive reinforcement and motivators	Providing positive reinforcement and motivators	Be strategic to meet the needs of all learners

**Part 5: Positive Behavioral Interventions and Supports (PBIS)** - A Framework for organizing the implementation of evidenced based practices across a multi-tiered support system. PBIS focuses on making improvements in the school or classroom environment to ensure students will successfully meet social, behavioral and academic standards. DHS instructional leadership team, child study staff and special education clinicians will review current behavioral intervention supports and utilize a multidisciplinary team to meet the social emotional learning (SEL) needs of all students. Identifiable needs would be addressed to meet the needs of students with disabilities in inclusive classrooms. For example: A function-based approach would be used to develop and implement individual behavioral intervention plans, and a wraparound approach is taken to integrate family community and school support.

Annually, WPS accountability plans outlines that each school must integrate services and programs with the aim of upgrading the entire educational program of the whole school and to help all students reach proficient and advanced levels of achievement. The integration of inclusive services at Doherty High School will include the following areas of focus:

- Equity of Access: Ensuring all students have access to high quality instruction and materials and resources
- Engagement: Engagement with families and the various sectors of our community in developing opportunities for all students
- Safe and Healthy Students: Create supportive safe, and orderly learning environments marked by respectful interactions, acceptance, inclusiveness, and responsibilities to one another
- High quality teaching and learning: To support excellent instruction that improves students skills to prepare them for global citizenships
- College and Career Readiness: In support of current standards, activities that help students become college and career ready

DHS Instructional Leadership Team's (ILT) primary role will help lead the school's efforts at supporting the improvement of teaching and learning. The Principal and the ILT will also make decisions about the school's instructional program, leads and monitors student performance data regarding progress toward goals, coordinate several internal audits and self-assessments which will also include the inclusion self-assessment. The ILT will meet regularly twice monthly.

DHS (2019-20) Accountability Plan will include the following:

- Comprehensive Needs Analysis
  - Accountability Indicators [ Achievement, Growth, Discipline, Chronic Absenteeism and Attendance, Graduation and Dropout Rate, Progress toward attaining English Language Proficiency and Students with Disabilities
- Action Plan
  - Leadership, Shared Responsibility, and Professional Collaboration



- Establishing a community of practice through leadership shared responsibility for all students, and professional collaboration (Focus on improving core instruction and tiered interventions systems using a variety of data)
  - Include targeted support to strengthen PLC practices and ensure access for all students
  - Intentional Practices for Improving Instruction [ Employing intentional practices for improving teacher –specific and student responsive instruction]
  - Focus on refining the use of observations and student-specific data so that constructive feedback to teachers is provided and student specific needs are clearly identified to inform instructional responses
  - Providing Student- Specific Targeted Supports and Instruction to Ensure Access for All Students
  - A Safe, Respectful, and Collegial Climate for Teachers, Students and Families
  - Reducing Chronic Absenteeism
  - High School Graduation Rate and Persistence [ The Graduation Rate Improvement Team will monitor student attendance and achievement, review progress of participants in the “Adopt-A-Student” program, review feedback forms, and work with faculty to support efforts to increase student achievement
- Identify what evidence (artifacts, data sources, observations, etc..) will DHS school instructional team gather to monitor growth and/or change?
    - Evidence will include the following data source:

<b>Adult Implementation Indicator</b>	<b>Student Results Indicator</b>
Department meeting agendas	MCAS Data
PLC	STAR Data
Faculty meeting agendas	ACCESS Data
Shared student work samples	PSAT/SAT Data
Classroom visits	Advanced Placement Data
Observations	Common Assessments
Lesson Plans	Student Portfolios
Exit slips from professional learning activities	

- Alignment of the District Strategic Plan and Doherty High School Professional Learning Plan (PLP) will also provide the necessary assurance to promote inclusive services:
  - Support critical reading and writing across content areas to engage all learners

- Support culturally and linguistically diverse students
- Support social emotional needs of all students
- Support co-teaching opportunities for SWD

Attendees:

- **Maureen Binienda** | Superintendent | Worcester Public Schools
- **Jim Bedard** | Director of Environmental Management & Capital Projects | WPS
- **Russ Adams** | Assistant Commissioner | Worcester DPW
- **John Staley** | Assistant Principal | Doherty Memorial High School
- **Kyle Brenner** | Principal | Worcester Technical High School
- **Eugene Caruso** | OPM | Tishman AECOM
- **Katie Crockett** | Principal in Charge | LPA|A
- **Rob Para Jr.** | Project Architect | LPA|A
- **Chris Lee** | Project Manager | LPA|A
- **Christina Bazelmans** | Assistant Project Architect | LPA|A

Item:	Description:	Responsibility:
<b>PDP EDUCATIONAL PROGRAM</b>		
10.01.2019.01	Confirmed Adjustment counselor offices should be distributed with Assistant Principal suites throughout academic areas.	<b>Info.</b>
10.01.2019.02	Instructional coaches should be distributed in the academic area. John Staley (JS) confirmed that they do not require a dedicated conference room if there is adequate space in office for a small meeting and another conference room is located nearby.	<b>LPA A</b>
10.01.2019.03	Guidance <ul style="list-style-type: none"> <li>• Confirmed (12) Guidance offices, which should be centralized and in proximity to the Main admin suite.</li> <li>• JS will review the with Principal Sally Maloney (SM) if a 20-seat guidance conference room is required in addition to the Career Center/Café</li> </ul>	<b>WPS</b>
10.01.2019.04	Dining & Food Service <ul style="list-style-type: none"> <li>• Cafeteria area is based on 1670 enrollment at 3 lunches. Potential increase of enrollment may necessitate 4 lunch periods.</li> <li>• Confirmed that a buffet is desired in the Staff dining area, for daily staff use and after-hours events.</li> </ul>	<b>Info.</b>

Item:	Description:	Responsibility:
10.01.2019.05	<p>JS Confirmed the following teacher planning spaces are adequate for cross discipline collaboration:</p> <ul style="list-style-type: none"> <li>• (6) Core academic: Math, English, History, Science, WL, ELL</li> <li>• (4) 9th grade Teams</li> <li>• (2) for cross disc. (Math/Science and English/History)</li> <li>• (1) Music/Art</li> <li>• (1) SPED</li> <li>• (1) ETA Teacher planning (confirm if this is a duplicate)</li> </ul>	Info.
10.01.2019.06	<p>Special Education</p> <ul style="list-style-type: none"> <li>• SM and Kay Seale to review the number and size of inclusion classrooms in the Space summary with proposed staff and Educational Program.                             <ul style="list-style-type: none"> <li>○ (2) per academic department and one per 9<sup>th</sup> grade team.</li> </ul> </li> </ul>	WPS
10.01.2019.07	<p>Vocational/Tech Ed</p> <ul style="list-style-type: none"> <li>• JS and Kyle Brenner (KB) will meet to review the proposed schedule and number of teachers and spaces required to achieve the minimum 900 hours of program related instruction. Schedule review will confirm if related classrooms may be shared or reduced.</li> <li>• LPA A and WPS will set up tours of similar Chapter 74 programs and a revisit to Billerica Memorial HS.                             <ul style="list-style-type: none"> <li>○ October 9<sup>th</sup> <ul style="list-style-type: none"> <li>▪ 10:00 AM BMC Durfee HS, Fall River</li> </ul> </li> <li>○ October 18<sup>th</sup> <ul style="list-style-type: none"> <li>▪ TBD: Minuteman Regional Technical, Lexington MA</li> <li>▪ TBD: Medford Vocational Technical HS, Medford MA</li> <li>▪ TBD: Montachusett Regional Vocational School, Fitchburg MA</li> </ul> </li> <li>○ TBD                                     <ul style="list-style-type: none"> <li>▪ TBD: NEL CPS Construction Career Academy Cranston RI</li> </ul> </li> </ul> </li> </ul>	LPA A / WPS

Item:	Description:	Responsibility:
-------	--------------	-----------------

- 10.01.2019.08** DESE Ch 74. Approval Process
- KB will inquire with Ramona Foster at DESE as to the review status of the Doherty Ch. 74 Program Submission, submitted to the MSBA on 7/19/19.
  - Eugene Caruso (EC) will follow up with MSBA regarding the PDP review status
  - DESE’s annual Chapter 74 program approval process is sequential, for 2019–2020:

WPS

<b>Intent to Apply (required prior to Part A submission)</b>	5:00 pm, 9/23/2019
<b>Preliminary (Part A)</b>	5:00 pm, 11/22/2019
<b>Concluding (Part B)</b>	5:00 pm, 3/13/2020
<b>Final Decisions (except where facility and/or licensure does not permit)</b>	6/30/2020
<b>Final Decisions (All other)</b>	11/1/2020

OPM

Info

- DESE suggests that each program should be established as a CTE program prior to application.

**10.01.2019.09** Coping room in Ed. Program is synonymous with Social Emotional Learning Center (in-house suspension). Therapeutic planning, STEP cooldown space and extra exam room in nurse’s suite are separate.

Info.

**10.01.2019.10** JS noted that all proposed computer labs are fully scheduled and staffed, and sharing between different departments is not likely.

Info.

**10.01.2019.11** JS confirmed that two health classrooms are required to support two health teachers (increased from 1.4 due to larger enrollment)

Info.

Minutes by: Christina Bazelmans, LPA|A  
 Distribute to: Attendees, Steering Committee  
 File location: 1904/Minutes/Owner/2019.10.01 PDP SST

Attendees:

- Jim Bedard | Director of Environmental Management & Capital Projects | WPS
- Russ Adams | Assistant Commissioner | Worcester DPW
- Sharon Ducsik | FNH
- Denis Ducsik | FNH
- Sheila Reid | FNH
- Conor McCormack | FNH/Park Spirit
- Kevin McCormack | FNH
- Philip Bolduc | FNH/Park Spirit
- Andy Serrato | FNH
- John Goins | FNH
- Brian McCarthy | Park Spirit
- Brittany Legasey | Park Spirit
- Rick Miller | FNH
- Carleen Miller | FNH
- Katie Crockett | Principal in Charge | LPA|A
- Rob Para Jr. | Project Architect | LPA|A
- Rick Lamoureux | Principal & Project Manager | LPA|A
- Chris Lee | Project Manager | LPA|A

Item:	Description:	Responsibility:
	The following is only a synopsis of discussions:	
10.30.2019.01	LPA A reviewed the feasibility study process and that LPA A is reviewing the Doherty site (various options), the Chandler Magnet site, and the Foley Stadium site.	Info.
10.30.2019.02	LPA A advised that the project team is reviewing options for the Doherty site, with the existing school remaining occupied.	Info.
10.30.2019.03	FNH discussed the deed restrictions and historical ownership for the site relative to the Park.	Info.

Item:	Description:	Responsibility:
10.30.2019.05	FNN discussed an interest in sensitive massing of the school to minimize impact on the park.	Info.
10.30.2019.06	<p>FNN discussed their concerns that the proposed location and its impact on the park. FNN expressed particular concerns about:</p> <ul style="list-style-type: none"> <li>• The appearance of the building from Park Ave.</li> <li>• Material choices for retaining walls</li> <li>• Maintaining access road to the summit (with parking) for disc golf, dog walkers, and maintenance.</li> <li>• Integrity of the East-West trail</li> <li>• Preference to for building massing and materials that will blend into the site.</li> <li>• Additional student traffic on the existing trails</li> </ul>	Info.
10.30.2019.07	FNN expressed desire to preserve the Beech trees along Highland Street and the existing stone wall.	Info.
10.30.2019.08	FNN discussed that extensive new retaining walls would not be desired.	Info.
10.30.2019.09	LPA A discussed the potential of adding a path from the rear of the school to the existing path to Pleasant Street. Clarified that the intent of the path would be to develop with materials similar to the existing.	Info.
10.30.2019.10	<p>Discussions were held regarding park improvements that could be jointly beneficial to the school and the park. FNN members suggested the following:</p> <ol style="list-style-type: none"> <li>a. Funding or resources to improve the existing Cross Country/ walking trails</li> <li>b. Health walk/improvements at north side of Pleasant Street</li> <li>c. Tennis court resurfacing/improvements</li> <li>d. Improvement of service roads</li> <li>e. City commitment to maintain the trails</li> <li>f. Additional parking spaces for FNN events</li> </ol>	Info.

Item:	Description:	Responsibility:
10.30.2019.11	<p>g. Development of an environmental program at the new Doherty Memorial HS</p> <p><b>Post Note:</b> See attached FNH letter entitled Capital Improvements to Newton Hill and Design Considerations for the proposed Doherty High School site at Newton Hill.</p> <p>LPA A noted that the east/west trail is mostly on the parks property except at the south end (according to the recently published survey). FNH, Rick Miller (RM), observed that the corners were staked out and appears different.</p> <p><b>Post Note:</b> There is a traverse stake by the surveyor that is <u>not</u> the property line, which gives the appearance that the actual line is as RM describes. However, the trail is mostly on the park land (Survey documents are included in the PSR ).</p>	Info.
Attachments:	Capital Improvements to Newton Hill and Design Considerations for the proposed Doherty High School site at Newton Hill	
Minutes by:	Robert Para/pf., LPA A	
Distribute to:	Attendees Friends of Newton Hill City of Worcester Parks Dept. City of Worcester DPW Steering Committee	
File location:	1904/Minutes/Owner/2019.10.30 Friends of Newton Hill	





## **Capital Improvements to Newton Hill and Design Considerations for the proposed Doherty High School site at Newton Hill**

In response to a request from the meeting on October 30, 2019 between LPAA, the City of Worcester, and the Friends of Newton Hill, below is a list of capital improvements the Friends of Newton Hill believe are essential to maintaining and improving the Newton Hill section of Elm Park.

Additionally, we are including a list of design considerations we would like to see for the new Doherty High School, should the Building Committee select Newton Hill as the site of the new school.

Improvements to the current condition of the Newton Hill:

1. Any proposed pedestrian access to Foley stadium from the back of the current Doherty student parking lot, along Park Ave, up the Lincoln Stroll, and along Blessed Sacrament Church to Pleasant Street be done without interference or disruption of the East-West trail, the disc golf course, and the Nordic skiing course as well as preservation of any historic path or service road
  - a. City/school maintenance of this trail due to increased student traffic & trash
2. Resurfacing of the four tennis courts and basketball court at Newton Square
3. Improving streetscape condition surrounding the entire park, particularly along Highland St, Park Ave, and Pleasant Street, including wider sidewalks and bike lanes
4. Addressing erosion and improving trail access to the Newton Trail trailhead at Newton Square
5. Addressing erosion & surface condition of the Lincoln Stroll & lower portion of the Summit Road for service use.
6. Removing the water fountain at Newton Square

Design Considerations for the proposed new Doherty High School at Newton Hill:

1. The design of the building must fit and respect the historic nature of the park, incorporate the natural landscape and slope, and consider the sightlines from both Highland Street and Park Ave
2. Preservation of the section of the East-West Trail from Highland St. to the back of the Doherty Parking lot
3. Preserve access to the Summit Road service entrance currently at the back of the Doherty Parking Lot with a minimum of 40 parking spaces near the entrance of the service gate.
4. The design of any retaining walls should fit into the landscape and use natural material
5. Preservation of the historic walls and heritage trees along Highland Street
6. Restoration to any trail, fitness station, or disc golf hole impacted by construction
7. An improved traffic plan for the Highland Street corridor

As stated in the meeting, the Friends of Newton Hill is a volunteer-run organization that has been improving, maintaining and providing programming in Newton Hill for over 18 years. We are gravely concerned about how the construction of a new Doherty High School will impact the nature of the park and established park amenities around the Doherty site. While we do not support the construction of the new Doherty at the Newton Hill site, we look forward to working with LPAA and the City to mitigate the impact of new school to Newton Hill.

Thank you

Attendees:

- **Maureen Binienda** | Superintendent | Worcester Public Schools
- **David Shea** | Athletics Director | WPS
- **Jim Bedard** | Director of Environmental Management & Capital Projects | WPS
- **Rob Antonelli** | Assistant Commissioner DPW&P | City of Worcester
- **Russ Adams** | Assistant Commissioner | Worcester DPW
- **Katie Crockett** | Principal in Charge | LPA|A
- **Rob Para Jr.** | Project Architect | LPA|A
- **Rick Lamoureux** | Principal & Project Manager | LPA|A
- **Chris Lee** | Project Manager | LPA|A
- **Christina Bazelmans** | Assistant Project Architect | LPA|A

Item:	Description:	Responsibility:
<b>PDP EDUCATIONAL PROGRAM</b>		
10.03.2019.01	LPA A Reviewed the scope of the study and the three sites currently under investigation (Doherty Site, Foley Stadium site and Chandler Magnet School Site)	<b>Info.</b>
10.03.2019.02	Confirmation of which fields/courts are the highest priority is contingent on a selected site and the proximity to existing fields, with the understanding that none of the proposed sites can meet the full desired site program. (Review with Doherty Athletic program/ department head)	<b>Info.</b>
10.03.2019.03	David Shea (DS) confirmed that students walk from Doherty to Foley stadium via Pleasant street (rarely along Park Ave) and that there is a back entrance to the stadium complex at Coombs road. <ul style="list-style-type: none"> <li>• Noted that the google aerial image should be updated to reflect that the tennis courts have been removed</li> </ul>	<b>Info.</b>
10.03.2019.04	DS reviewed the use of Foley Stadium and practice fields. See attached file <b>Foley Stadium Usage &amp; Schedule 10.03.19.pdf</b> <ul style="list-style-type: none"> <li>• Foley Stadium is also rented for community use, but school use takes priority.</li> <li>• This document takes into account the teams that will utilize the new game and practice field at the new South High.</li> </ul>	<b>Info.</b>

Item:	Description:	Responsibility:
	<ul style="list-style-type: none"> <li>• Many indoor track students will be displaced once the existing South High building is demolished, it would be very problematic to lose the outdoor track at Foley Stadium as well.</li> <li>• If the Foley Stadium site is selected, the loss of Stadium could displace up to 1500–1700 student athletes, therefore a replacement facility would need to be completed prior to the start of construction</li> </ul>	
10.03.2019.05	<p>Program for a replacement stadium would include:</p> <ul style="list-style-type: none"> <li>• Football stadium with track and bleachers for 1500</li> <li>• Adjacent flat space for additional visitors / BYO seating</li> <li>• Lockers and toilet facilities (code requirement)</li> <li>• Storage and service building</li> <li>• Parking, bus drop off and access facilities</li> <li>• Baseball field and two rectangular fields, practice fields as currently developed, as a minimum.</li> <li>• Noted that at present, other area fields have to be used for Doherty and other WPS field use.</li> <li>• LPA will develop a budget for the cost of replacing this facility for the purposes of the Feasibility Study</li> </ul>	LPA A
10.03.2019.06	<p>Rob Antonelli (RA) reviewed the use of the nearby parks. See attached file <b>Parks Maps &amp; Usage 10.03.19.pdf</b></p>	Info.
10.03.2019.07	<p>Newton Hill</p> <ul style="list-style-type: none"> <li>• Doherty’s cross-country running and cross-country skiing teams use Newton Hill to practice</li> <li>• Upper parking area is used by parks for access to disc golf and top of Newton Hill.                             <ul style="list-style-type: none"> <li>○ Rob Para (RP) noted that the existing parking lot was constructed slightly over the property line into park land. Have no records what agreement that was in place at the time for joint use.</li> <li>○ RA noted that the Parks Dept. needs access to Newton Hill for maintenance somewhere in the</li> </ul> </li> </ul>	Info.

Item:	Description:	Responsibility:
	<p>vicinity of the student parking lot and that repaving these parking spaces would be acceptable if access to the park is maintained at this location.</p> <ul style="list-style-type: none"> <li>o The School noted they will review the security implications of this arrangement.</li> <li>• RA noted they would be amendable to the creation/improvement of a path to Foley stadium or signage, trail improvements if considered mutually beneficial.</li> <li>• Accessibility of this path may be an issue; a MAAB variance may be required</li> <li>• DS suggested that resurfacing the Newton Hill tennis courts could be a part of the Doherty project, similar to South High precedent.</li> </ul>	
10.03.2019.08	<p>Beaver Brook</p> <ul style="list-style-type: none"> <li>• Fields are designed so that the open field area, and low areas between the fields floods first during the routine flooding. Though at larger storms/rain events. The game fields still experience a minor flood a few times per year and a major flood every 5 years.</li> <li>• Football field and softball field are regulation size, two little league fields are smaller, but there is no room for expansion. RA will provide site plans and a narrative of the current use.</li> <li>• Students park at Beaver Brook lot for access to Foley stadium</li> <li>• All fields are scheduled fully from 5:00 PM onward; Parks department gives scheduling priority to the schools, permit must be requested. WSU and Assumption also reserve field use, as their own facilities are limited</li> <li>• RA noted that moving some of the programs scheduled at Beaver Brook would not be possible due to lack of transportation for area residents who primarily use these fields.</li> <li>• Test borings completed for lighting improvements are available, the lights did require deeper caissons due to the soil conditions. RA will forward the information they have</li> </ul>	<p>CoW</p> <p>CoW</p>

Item:	Description:	Responsibility:
	available. RA questions if soils are adequate to support a track without differential settlement.	
10.03.2019.09	<p>Duffy Park</p> <ul style="list-style-type: none"> <li>• Though the park has a brand new playground, RA noted that the baseball field is underutilized. The field has no lighting, and nearby wetlands.</li> <li>• Redevelopment of the baseball fields to much needed rectangular fields may increase utilization. The parks department has reviewed clearing additional trees to expand the field area.</li> <li>• Coordination with and sensitivity to neighbors would be required.</li> <li>• Improvements to Duffy Field could take place prior to construction at Doherty to supplement the loss of practice fields on site.</li> <li>• The Road extension (paper street) land would be available for use as being City owned.</li> <li>• The owners of the adjacent land where the tower are not familiar to the team.</li> </ul>	Info.
10.03.2019.10	<p>Chandler Magnet</p> <ul style="list-style-type: none"> <li>• The fields behind Chandler Magnet School are maintained and scheduled by WPS, and is assumed not subject to Article 97. (See attached file Chandler Magnet Field Usage 2018.pdf)</li> <li>• Adult Men’s leagues and Burkett little league rent this field outside of school hours.</li> <li>• Noted that the northerly and easterly property line is 30–70 feet beyond the current developed area and fields.</li> <li>• Noted that the westerly foot of the slope is 50–70 feet beyond the developed area.</li> </ul>	Info.

Minutes by: Christina Bazelmans, LPA|A  
 Distribute to: Attendees, Steering Committee  
 Attachments: Foley Stadium Usage & Schedule 10.03.19.pdf , Chandler Magnet Field Usage 2018.pdf  
 Parks Maps & Usage 10.03.19.pdf  
 File location: 1904/Minutes/Owner/2019.10.03 Athletics and Parks

Commerce Bank Field  
at  
Foley Stadium

1. Worcester Public Schools teams that utilize Foley Stadium:
  - A. Burncoat Varsity Football
  - B. Doherty Varsity Football
  - C. North Varsity Football
  - D. South Varsity Football
  - E. Worcester Tech Varsity Football
  - F. North JV Football
  - G. Doherty JV Football
  - H. Doherty Freshman Football
  - I. JV Thanksgiving "Turkey Bowl" Games
  - J. Varsity Thanksgiving Day Games (Wednesday and Thursday)
  - K. Doherty JV and Varsity Field Hockey
  - L. Doherty JV and Varsity Boys Soccer
  - M. Doherty JV and Varsity Girls Soccer
  - N. Doherty JV and Varsity Baseball
  - O. City Wide JV and Varsity Boys Lacrosse
  - P. City Wide JV and Varsity Girls Lacrosse
  - Q. Burncoat Boys and Girls Outdoor Track
  - R. Doherty Boys and Girls Outdoor Track
  - S. North/WTHS Boys and Girls Outdoor Track
  - T. South Boys and Girls Outdoor Track
  - U. Main South Boys and Girls Outdoor Track
  - V. WPS JV and Varsity Baseball Teams when the city has not released their fields
  - W. Main South JV and Varsity Boys Soccer
  - X. Main South JV Girls Soccer
  - Y. North JV and Varsity Boys Soccer
  
2. Concessions at various athletic events used for added revenue for the Worcester Public Schools, along with ticket sales for Varsity Football games.
  
3. Rentals at Foley Stadium:
  - A. Worcester World Cup
  - B. Worcester Field Hockey
  - C. Worcester Wildcats
  - D. MIAA playoffs for Soccer and Football
  - E. Worcester Cowboys
  - F. Local High Schools and College needing fields
  - G. Miss Q's Camp Quest 5K
  - H. ALS Walk
  - I. WPS Passing League
  - J. WPS Field Hockey Camp
  - K. Plus others that rent Foley Stadium throughout the year

4. Seasons and times that Foley Stadium is utilized:

- A. Fall: Monday – Thursday 2:00 – 7:00 pm  
Friday 2:00 - 9:00 pm  
Saturday 8:00 am - 3:00 pm  
Sunday Depends on rentals

B. Winter: Foley Stadium is closed from December through the middle of March

- C. Spring: Monday – Friday 2:00 - 7:00pm  
Saturday 8:00 am – 3:00 pm and depends on rentals  
Sunday Depends on rentals

D. Summer: Depends on rentals – No WPS teams due to summer break

5. Mini Olympics Fall and Spring, run through the Physical Education Department

## Chandler Magnet Field Usage January 1, 2018 through October 4, 2019

No.	Location	Event Start Date	Event Title	Schedule ID	Building	Room	Organization
1	Chandler Magnet	3/26/2018	WSU Club Lacrosse Team Practice	13720	Chandler Magnet School	Fields (Elementary)	Worcester State University Club Lacrosse Team
2	Chandler Magnet	3/28/2018	WSU Club Lacrosse Team Practice	13720	Chandler Magnet School	Fields (Elementary)	Worcester State University Club Lacrosse Team
3	Chandler Magnet	3/30/2018	WSU Club Lacrosse Team Practice	13720	Chandler Magnet School	Fields (Elementary)	Worcester State University Club Lacrosse Team
4	Chandler Magnet	4/1/2018	Soccer Games (Chandler Magnet)	13630	Chandler Magnet School	Fields (Elementary)	Worcester Youth Soccer League
5	Chandler Magnet	4/2/2018	WSU Club Lacrosse Team Practice	13720	Chandler Magnet School	Fields (Elementary)	Worcester State University Club Lacrosse Team
6	Chandler Magnet	4/2/2018	Soccer Practice (Chandler)	13629	Chandler Magnet School	Fields (Elementary)	Worcester Youth Soccer League
7	Chandler Magnet	4/3/2018	Soccer Practice (Chandler)	13629	Chandler Magnet School	Fields (Elementary)	Worcester Youth Soccer League
8	Chandler Magnet	4/4/2018	WSU Club Lacrosse Team Practice	13720	Chandler Magnet School	Fields (Elementary)	Worcester State University Club Lacrosse Team
9	Chandler Magnet	4/4/2018	Soccer Practice (Chandler)	13629	Chandler Magnet School	Fields (Elementary)	Worcester Youth Soccer League
10	Chandler Magnet	4/5/2018	Soccer Practice (Chandler)	13629	Chandler Magnet School	Fields (Elementary)	Worcester Youth Soccer League
11	Chandler Magnet	4/6/2018	WSU Club Lacrosse Team Practice	13720	Chandler Magnet School	Fields (Elementary)	Worcester State University Club Lacrosse Team
12	Chandler Magnet	4/6/2018	Soccer Practice (Chandler)	13629	Chandler Magnet School	Fields (Elementary)	Worcester Youth Soccer League
13	Chandler Magnet	4/7/2018	Soccer Games (Chandler Magnet)	13630	Chandler Magnet School	Fields (Elementary)	Worcester Youth Soccer League
14	Chandler Magnet	4/8/2018	Soccer Games (Chandler Magnet)	13630	Chandler Magnet School	Fields (Elementary)	Worcester Youth Soccer League
15	Chandler Magnet	4/9/2018	WSU Club Lacrosse Team Practice	13720	Chandler Magnet School	Fields (Elementary)	Worcester State University Club Lacrosse Team
16	Chandler Magnet	4/9/2018	Soccer Practice (Chandler)	13629	Chandler Magnet School	Fields (Elementary)	Worcester Youth Soccer League
17	Chandler Magnet	4/10/2018	Soccer Practice (Chandler)	13629	Chandler Magnet School	Fields (Elementary)	Worcester Youth Soccer League
18	Chandler Magnet	4/11/2018	WSU Club Lacrosse Team Practice	13720	Chandler Magnet School	Fields (Elementary)	Worcester State University Club Lacrosse Team
19	Chandler Magnet	4/11/2018	Soccer Practice (Chandler)	13629	Chandler Magnet School	Fields (Elementary)	Worcester Youth Soccer League
20	Chandler Magnet	4/12/2018	Soccer Practice (Chandler)	13629	Chandler Magnet School	Fields (Elementary)	Worcester Youth Soccer League
21	Chandler Magnet	4/13/2018	WSU Club Lacrosse Team Practice	13720	Chandler Magnet School	Fields (Elementary)	Worcester State University Club Lacrosse Team
22	Chandler Magnet	4/13/2018	Soccer Practice (Chandler)	13629	Chandler Magnet School	Fields (Elementary)	Worcester Youth Soccer League



23	Chandler Magnet	4/14/2018	Soccer Games (Chandler Magnet)	13630	Chandler Magnet School	Fields (Elementary)	Worcester Youth Soccer League
24	Chandler Magnet	4/15/2018	Soccer Games (Chandler Magnet)	13630	Chandler Magnet School	Fields (Elementary)	Worcester Youth Soccer League
25	Chandler Magnet	4/16/2018	WSU Club Lacrosse Team Practice	13720	Chandler Magnet School	Fields (Elementary)	Worcester State University Club Lacrosse Team
26	Chandler Magnet	4/16/2018	Jesse Burkett LL practices	13799	Chandler Magnet School	Fields (Elementary)	Jesse Burkett
27	Chandler Magnet	4/16/2018	Soccer Practice (Chandler)	13629	Chandler Magnet School	Fields (Elementary)	Worcester Youth Soccer League
28	Chandler Magnet	4/17/2018	Jesse Burkett LL practices	13799	Chandler Magnet School	Fields (Elementary)	Jesse Burkett
29	Chandler Magnet	4/17/2018	Soccer Practice (Chandler)	13629	Chandler Magnet School	Fields (Elementary)	Worcester Youth Soccer League
30	Chandler Magnet	4/18/2018	WSU Club Lacrosse Team Practice	13720	Chandler Magnet School	Fields (Elementary)	Worcester State University Club Lacrosse Team
31	Chandler Magnet	4/18/2018	Jesse Burkett LL practices	13799	Chandler Magnet School	Fields (Elementary)	Jesse Burkett
32	Chandler Magnet	4/18/2018	Soccer Practice (Chandler)	13629	Chandler Magnet School	Fields (Elementary)	Worcester Youth Soccer League
33	Chandler Magnet	4/19/2018	Jesse Burkett LL practices	13799	Chandler Magnet School	Fields (Elementary)	Jesse Burkett
34	Chandler Magnet	4/19/2018	Soccer Practice (Chandler)	13629	Chandler Magnet School	Fields (Elementary)	Worcester Youth Soccer League
35	Chandler Magnet	4/20/2018	WSU Club Lacrosse Team Practice	13720	Chandler Magnet School	Fields (Elementary)	Worcester State University Club Lacrosse Team
36	Chandler Magnet	4/20/2018	Jesse Burkett LL practices	13799	Chandler Magnet School	Fields (Elementary)	Jesse Burkett
37	Chandler Magnet	4/20/2018	Soccer Practice (Chandler)	13629	Chandler Magnet School	Fields (Elementary)	Worcester Youth Soccer League
38	Chandler Magnet	4/21/2018	Soccer Games (Chandler Magnet)	13630	Chandler Magnet School	Fields (Elementary)	Worcester Youth Soccer League
39	Chandler Magnet	4/21/2018	Jesse Burkett LL practices	13799	Chandler Magnet School	Fields (Elementary)	Jesse Burkett
40	Chandler Magnet	4/22/2018	Soccer Games (Chandler Magnet)	13630	Chandler Magnet School	Fields (Elementary)	Worcester Youth Soccer League
41	Chandler Magnet	4/23/2018	Jesse Burkett LL practices	13799	Chandler Magnet School	Fields (Elementary)	Jesse Burkett
42	Chandler Magnet	4/23/2018	Soccer Practice (Chandler)	13629	Chandler Magnet School	Fields (Elementary)	Worcester Youth Soccer League
43	Chandler Magnet	4/24/2018	Jesse Burkett LL practices	13799	Chandler Magnet School	Fields (Elementary)	Jesse Burkett
44	Chandler Magnet	4/24/2018	Soccer Practice (Chandler)	13629	Chandler Magnet School	Fields (Elementary)	Worcester Youth Soccer League
45	Chandler Magnet	4/25/2018	Jesse Burkett LL practices	13799	Chandler Magnet School	Fields (Elementary)	Jesse Burkett
46	Chandler Magnet	4/25/2018	Soccer Practice (Chandler)	13629	Chandler Magnet School	Fields (Elementary)	Worcester Youth Soccer League
47	Chandler Magnet	4/26/2018	Jesse Burkett LL practices	13799	Chandler Magnet School	Fields (Elementary)	Jesse Burkett
48	Chandler Magnet	4/26/2018	Soccer Practice (Chandler)	13629	Chandler Magnet School	Fields (Elementary)	Worcester Youth Soccer League

49	Chandler Magnet	4/27/2018	Jesse Burkett LL practices	13799	Chandler Magnet School	Fields (Elementary)	Jesse Burkett
50	Chandler Magnet	4/27/2018	Soccer Practice (Chandler)	13629	Chandler Magnet School	Fields (Elementary)	Worcester Youth Soccer League
51	Chandler Magnet	4/28/2018	Soccer Games (Chandler Magnet)	13630	Chandler Magnet School	Fields (Elementary)	Worcester Youth Soccer League
52	Chandler Magnet	4/28/2018	Jesse Burkett LL practices	13799	Chandler Magnet School	Fields (Elementary)	Jesse Burkett
53	Chandler Magnet	4/29/2018	Soccer Games (Chandler Magnet)	13630	Chandler Magnet School	Fields (Elementary)	Worcester Youth Soccer League
54	Chandler Magnet	4/30/2018	Jesse Burkett LL practices	13799	Chandler Magnet School	Fields (Elementary)	Jesse Burkett
55	Chandler Magnet	4/30/2018	Soccer Practice (Chandler)	13629	Chandler Magnet School	Fields (Elementary)	Worcester Youth Soccer League
56	Chandler Magnet	5/1/2018	Jesse Burkett LL practices	13799	Chandler Magnet School	Fields (Elementary)	Jesse Burkett
57	Chandler Magnet	5/1/2018	Soccer Practice (Chandler)	13629	Chandler Magnet School	Fields (Elementary)	Worcester Youth Soccer League
58	Chandler Magnet	5/1/2018	Camp Italia Retreat (Chandler Mag)	13885	Chandler Magnet School	Soccer Field	Camp Italia Retreat
59	Chandler Magnet	5/2/2018	Jesse Burkett LL practices	13799	Chandler Magnet School	Fields (Elementary)	Jesse Burkett
60	Chandler Magnet	5/2/2018	Soccer Practice (Chandler)	13629	Chandler Magnet School	Fields (Elementary)	Worcester Youth Soccer League
61	Chandler Magnet	5/3/2018	Jesse Burkett LL practices	13799	Chandler Magnet School	Fields (Elementary)	Jesse Burkett
62	Chandler Magnet	5/3/2018	Soccer Practice (Chandler)	13629	Chandler Magnet School	Fields (Elementary)	Worcester Youth Soccer League
63	Chandler Magnet	5/3/2018	Camp Italia Retreat (Chandler Mag)	13885	Chandler Magnet School	Soccer Field	Camp Italia Retreat
64	Chandler Magnet	5/4/2018	Jesse Burkett LL practices	13799	Chandler Magnet School	Fields (Elementary)	Jesse Burkett
65	Chandler Magnet	5/4/2018	Soccer Practice (Chandler)	13629	Chandler Magnet School	Fields (Elementary)	Worcester Youth Soccer League
66	Chandler Magnet	5/5/2018	Soccer Games (Chandler Magnet)	13630	Chandler Magnet School	Fields (Elementary)	Worcester Youth Soccer League
67	Chandler Magnet	5/5/2018	Jesse Burkett LL practices	13799	Chandler Magnet School	Fields (Elementary)	Jesse Burkett
68	Chandler Magnet	5/6/2018	Soccer Games (Chandler Magnet)	13630	Chandler Magnet School	Fields (Elementary)	Worcester Youth Soccer League
69	Chandler Magnet	5/7/2018	Jesse Burkett LL practices	13799	Chandler Magnet School	Fields (Elementary)	Jesse Burkett
70	Chandler Magnet	5/7/2018	Soccer Practice (Chandler)	13629	Chandler Magnet School	Fields (Elementary)	Worcester Youth Soccer League
71	Chandler Magnet	5/8/2018	Jesse Burkett LL practices	13799	Chandler Magnet School	Fields (Elementary)	Jesse Burkett
72	Chandler Magnet	5/8/2018	Soccer Practice (Chandler)	13629	Chandler Magnet School	Fields (Elementary)	Worcester Youth Soccer League
73	Chandler Magnet	5/9/2018	Jesse Burkett LL practices	13799	Chandler Magnet School	Fields (Elementary)	Jesse Burkett
74	Chandler Magnet	5/9/2018	Soccer Practice (Chandler)	13629	Chandler Magnet School	Fields (Elementary)	Worcester Youth Soccer League
75	Chandler Magnet	5/10/2018	Jesse Burkett LL practices	13799	Chandler Magnet School	Fields (Elementary)	Jesse Burkett

76	Chandler Magnet	5/10/2018	Soccer Practice (Chandler)	13629	Chandler Magnet School	Fields (Elementary)	Worcester Youth Soccer League
77	Chandler Magnet	5/11/2018	Jesse Burkett LL practices	13799	Chandler Magnet School	Fields (Elementary)	Jesse Burkett
78	Chandler Magnet	5/11/2018	Soccer Practice (Chandler)	13629	Chandler Magnet School	Fields (Elementary)	Worcester Youth Soccer League
79	Chandler Magnet	5/12/2018	Soccer Games (Chandler Magnet)	13630	Chandler Magnet School	Fields (Elementary)	Worcester Youth Soccer League
80	Chandler Magnet	5/12/2018	Jesse Burkett LL practices	13799	Chandler Magnet School	Fields (Elementary)	Jesse Burkett
81	Chandler Magnet	5/13/2018	Soccer Games (Chandler Magnet)	13630	Chandler Magnet School	Fields (Elementary)	Worcester Youth Soccer League
82	Chandler Magnet	5/14/2018	Jesse Burkett LL practices	13799	Chandler Magnet School	Fields (Elementary)	Jesse Burkett
83	Chandler Magnet	5/14/2018	Soccer Practice (Chandler)	13629	Chandler Magnet School	Fields (Elementary)	Worcester Youth Soccer League
84	Chandler Magnet	5/15/2018	Jesse Burkett LL practices	13799	Chandler Magnet School	Fields (Elementary)	Jesse Burkett
85	Chandler Magnet	5/15/2018	Soccer Practice (Chandler)	13629	Chandler Magnet School	Fields (Elementary)	Worcester Youth Soccer League
86	Chandler Magnet	5/16/2018	Jesse Burkett LL practices	13799	Chandler Magnet School	Fields (Elementary)	Jesse Burkett
87	Chandler Magnet	5/16/2018	Soccer Practice (Chandler)	13629	Chandler Magnet School	Fields (Elementary)	Worcester Youth Soccer League
88	Chandler Magnet	5/17/2018	Jesse Burkett LL practices	13799	Chandler Magnet School	Fields (Elementary)	Jesse Burkett
89	Chandler Magnet	5/17/2018	Soccer Practice (Chandler)	13629	Chandler Magnet School	Fields (Elementary)	Worcester Youth Soccer League
90	Chandler Magnet	5/18/2018	Jesse Burkett LL practices	13799	Chandler Magnet School	Fields (Elementary)	Jesse Burkett
91	Chandler Magnet	5/18/2018	Soccer Practice (Chandler)	13629	Chandler Magnet School	Fields (Elementary)	Worcester Youth Soccer League
92	Chandler Magnet	5/19/2018	Soccer Games (Chandler Magnet)	13630	Chandler Magnet School	Fields (Elementary)	Worcester Youth Soccer League
93	Chandler Magnet	5/19/2018	Jesse Burkett LL practices	13799	Chandler Magnet School	Fields (Elementary)	Jesse Burkett
94	Chandler Magnet	5/20/2018	Soccer Games (Chandler Magnet)	13630	Chandler Magnet School	Fields (Elementary)	Worcester Youth Soccer League
95	Chandler Magnet	5/21/2018	Jesse Burkett LL practices	13799	Chandler Magnet School	Fields (Elementary)	Jesse Burkett
96	Chandler Magnet	5/21/2018	Soccer Practice (Chandler)	13629	Chandler Magnet School	Fields (Elementary)	Worcester Youth Soccer League
97	Chandler Magnet	5/22/2018	Jesse Burkett LL practices	13799	Chandler Magnet School	Fields (Elementary)	Jesse Burkett
98	Chandler Magnet	5/22/2018	Soccer Practice (Chandler)	13629	Chandler Magnet School	Fields (Elementary)	Worcester Youth Soccer League
99	Chandler Magnet	5/23/2018	Jesse Burkett LL practices	13799	Chandler Magnet School	Fields (Elementary)	Jesse Burkett
100	Chandler Magnet	5/23/2018	Soccer Practice (Chandler)	13629	Chandler Magnet School	Fields (Elementary)	Worcester Youth Soccer League
101	Chandler Magnet	5/24/2018	Jesse Burkett LL practices	13799	Chandler Magnet School	Fields (Elementary)	Jesse Burkett

102	Chandler Magnet	5/24/2018	Soccer Practice (Chandler)	13629	Chandler Magnet School	Fields (Elementary)	Worcester Youth Soccer League
103	Chandler Magnet	5/25/2018	Jesse Burkett LL practices	13799	Chandler Magnet School	Fields (Elementary)	Jesse Burkett
104	Chandler Magnet	5/25/2018	Soccer Practice (Chandler)	13629	Chandler Magnet School	Fields (Elementary)	Worcester Youth Soccer League
105	Chandler Magnet	5/26/2018	Soccer Games (Chandler Magnet)	13630	Chandler Magnet School	Fields (Elementary)	Worcester Youth Soccer League
106	Chandler Magnet	5/26/2018	Jesse Burkett LL practices	13799	Chandler Magnet School	Fields (Elementary)	Jesse Burkett
107	Chandler Magnet	5/27/2018	Soccer Games (Chandler Magnet)	13630	Chandler Magnet School	Fields (Elementary)	Worcester Youth Soccer League
108	Chandler Magnet	5/28/2018	Jesse Burkett LL practices	13799	Chandler Magnet School	Fields (Elementary)	Jesse Burkett
109	Chandler Magnet	5/28/2018	Soccer Practice (Chandler)	13629	Chandler Magnet School	Fields (Elementary)	Worcester Youth Soccer League
110	Chandler Magnet	5/29/2018	Jesse Burkett LL practices	13799	Chandler Magnet School	Fields (Elementary)	Jesse Burkett
111	Chandler Magnet	5/29/2018	Soccer Practice (Chandler)	13629	Chandler Magnet School	Fields (Elementary)	Worcester Youth Soccer League
112	Chandler Magnet	5/30/2018	Jesse Burkett LL practices	13799	Chandler Magnet School	Fields (Elementary)	Jesse Burkett
113	Chandler Magnet	5/30/2018	Soccer Practice (Chandler)	13629	Chandler Magnet School	Fields (Elementary)	Worcester Youth Soccer League
114	Chandler Magnet	5/31/2018	Jesse Burkett LL practices	13799	Chandler Magnet School	Fields (Elementary)	Jesse Burkett
115	Chandler Magnet	5/31/2018	Soccer Practice (Chandler)	13629	Chandler Magnet School	Fields (Elementary)	Worcester Youth Soccer League
116	Chandler Magnet	6/1/2018	Jesse Burkett LL practices	13799	Chandler Magnet School	Fields (Elementary)	Jesse Burkett
117	Chandler Magnet	6/1/2018	Soccer Practice (Chandler)	13629	Chandler Magnet School	Fields (Elementary)	Worcester Youth Soccer League
118	Chandler Magnet	6/2/2018	Soccer Games (Chandler Magnet)	13630	Chandler Magnet School	Fields (Elementary)	Worcester Youth Soccer League
119	Chandler Magnet	6/2/2018	Jesse Burkett LL practices	13799	Chandler Magnet School	Fields (Elementary)	Jesse Burkett
120	Chandler Magnet	6/3/2018	Soccer Games (Chandler Magnet)	13630	Chandler Magnet School	Fields (Elementary)	Worcester Youth Soccer League
121	Chandler Magnet	6/4/2018	Jesse Burkett LL practices	13799	Chandler Magnet School	Fields (Elementary)	Jesse Burkett
122	Chandler Magnet	6/4/2018	Soccer Practice (Chandler)	13629	Chandler Magnet School	Fields (Elementary)	Worcester Youth Soccer League
123	Chandler Magnet	6/5/2018	Jesse Burkett LL practices	13799	Chandler Magnet School	Fields (Elementary)	Jesse Burkett
124	Chandler Magnet	6/5/2018	Soccer Practice (Chandler)	13629	Chandler Magnet School	Fields (Elementary)	Worcester Youth Soccer League
125	Chandler Magnet	6/6/2018	Jesse Burkett LL practices	13799	Chandler Magnet School	Fields (Elementary)	Jesse Burkett
126	Chandler Magnet	6/6/2018	Soccer Practice (Chandler)	13629	Chandler Magnet School	Fields (Elementary)	Worcester Youth Soccer League
127	Chandler Magnet	6/7/2018	Jesse Burkett LL practices	13799	Chandler Magnet School	Fields (Elementary)	Jesse Burkett

128	Chandler Magnet	6/7/2018	Soccer Practice (Chandler)	13629	Chandler Magnet School	Fields (Elementary)	Worcester Youth Soccer League
129	Chandler Magnet	6/8/2018	Jesse Burkett LL practices	13799	Chandler Magnet School	Fields (Elementary)	Jesse Burkett
130	Chandler Magnet	6/8/2018	Soccer Practice (Chandler)	13629	Chandler Magnet School	Fields (Elementary)	Worcester Youth Soccer League
131	Chandler Magnet	6/9/2018	Soccer Games (Chandler Magnet)	13630	Chandler Magnet School	Fields (Elementary)	Worcester Youth Soccer League
132	Chandler Magnet	6/9/2018	Jesse Burkett LL practices	13799	Chandler Magnet School	Fields (Elementary)	Jesse Burkett
133	Chandler Magnet	6/10/2018	Soccer Games (Chandler Magnet)	13630	Chandler Magnet School	Fields (Elementary)	Worcester Youth Soccer League
134	Chandler Magnet	6/11/2018	Jesse Burkett LL practices	13799	Chandler Magnet School	Fields (Elementary)	Jesse Burkett
135	Chandler Magnet	6/11/2018	Soccer Practice (Chandler)	13629	Chandler Magnet School	Fields (Elementary)	Worcester Youth Soccer League
136	Chandler Magnet	6/12/2018	Jesse Burkett LL practices	13799	Chandler Magnet School	Fields (Elementary)	Jesse Burkett
137	Chandler Magnet	6/12/2018	Soccer Practice (Chandler)	13629	Chandler Magnet School	Fields (Elementary)	Worcester Youth Soccer League
138	Chandler Magnet	6/13/2018	Jesse Burkett LL practices	13799	Chandler Magnet School	Fields (Elementary)	Jesse Burkett
139	Chandler Magnet	6/13/2018	Soccer Practice (Chandler)	13629	Chandler Magnet School	Fields (Elementary)	Worcester Youth Soccer League
140	Chandler Magnet	6/14/2018	Jesse Burkett LL practices	13799	Chandler Magnet School	Fields (Elementary)	Jesse Burkett
141	Chandler Magnet	6/14/2018	Soccer Practice (Chandler)	13629	Chandler Magnet School	Fields (Elementary)	Worcester Youth Soccer League
142	Chandler Magnet	6/15/2018	Jesse Burkett LL practices	13799	Chandler Magnet School	Fields (Elementary)	Jesse Burkett
143	Chandler Magnet	6/15/2018	Soccer Practice (Chandler)	13629	Chandler Magnet School	Fields (Elementary)	Worcester Youth Soccer League
144	Chandler Magnet	6/16/2018	Soccer Games (Chandler Magnet)	13630	Chandler Magnet School	Fields (Elementary)	Worcester Youth Soccer League
145	Chandler Magnet	6/16/2018	Jesse Burkett LL practices	13799	Chandler Magnet School	Fields (Elementary)	Jesse Burkett
146	Chandler Magnet	6/17/2018	Soccer Games (Chandler Magnet)	13630	Chandler Magnet School	Fields (Elementary)	Worcester Youth Soccer League
147	Chandler Magnet	6/18/2018	Jesse Burkett LL practices	13799	Chandler Magnet School	Fields (Elementary)	Jesse Burkett
148	Chandler Magnet	6/18/2018	Soccer Practice (Chandler)	13629	Chandler Magnet School	Fields (Elementary)	Worcester Youth Soccer League
149	Chandler Magnet	6/19/2018	Jesse Burkett LL practices	13799	Chandler Magnet School	Fields (Elementary)	Jesse Burkett
150	Chandler Magnet	6/19/2018	Soccer Practice (Chandler)	13629	Chandler Magnet School	Fields (Elementary)	Worcester Youth Soccer League
151	Chandler Magnet	6/20/2018	Jesse Burkett LL practices	13799	Chandler Magnet School	Fields (Elementary)	Jesse Burkett
152	Chandler Magnet	6/20/2018	Soccer Practice (Chandler)	13629	Chandler Magnet School	Fields (Elementary)	Worcester Youth Soccer League
153	Chandler Magnet	6/21/2018	Jesse Burkett LL practices	13799	Chandler Magnet School	Fields (Elementary)	Jesse Burkett

154	Chandler Magnet	6/21/2018	Soccer Practice (Chandler)	13629	Chandler Magnet School	Fields (Elementary)	Worcester Youth Soccer League
155	Chandler Magnet	6/22/2018	Jesse Burkett LL practices	13799	Chandler Magnet School	Fields (Elementary)	Jesse Burkett
156	Chandler Magnet	6/22/2018	Soccer Practice (Chandler)	13629	Chandler Magnet School	Fields (Elementary)	Worcester Youth Soccer League
157	Chandler Magnet	6/23/2018	Soccer Games (Chandler Magnet)	13630	Chandler Magnet School	Fields (Elementary)	Worcester Youth Soccer League
158	Chandler Magnet	6/23/2018	Jesse Burkett LL practices	13799	Chandler Magnet School	Fields (Elementary)	Jesse Burkett
159	Chandler Magnet	6/24/2018	Soccer Games (Chandler Magnet)	13630	Chandler Magnet School	Fields (Elementary)	Worcester Youth Soccer League
160	Chandler Magnet	6/25/2018	Jesse Burkett LL practices	13799	Chandler Magnet School	Fields (Elementary)	Jesse Burkett
161	Chandler Magnet	6/25/2018	Soccer Practice (Chandler)	13629	Chandler Magnet School	Fields (Elementary)	Worcester Youth Soccer League
162	Chandler Magnet	6/26/2018	Jesse Burkett LL practices	13799	Chandler Magnet School	Fields (Elementary)	Jesse Burkett
163	Chandler Magnet	6/26/2018	Soccer Practice (Chandler)	13629	Chandler Magnet School	Fields (Elementary)	Worcester Youth Soccer League
164	Chandler Magnet	6/27/2018	Jesse Burkett LL practices	13799	Chandler Magnet School	Fields (Elementary)	Jesse Burkett
165	Chandler Magnet	6/27/2018	Soccer Practice (Chandler)	13629	Chandler Magnet School	Fields (Elementary)	Worcester Youth Soccer League
166	Chandler Magnet	6/28/2018	Jesse Burkett LL practices	13799	Chandler Magnet School	Fields (Elementary)	Jesse Burkett
167	Chandler Magnet	6/28/2018	Soccer Practice (Chandler)	13629	Chandler Magnet School	Fields (Elementary)	Worcester Youth Soccer League
168	Chandler Magnet	6/29/2018	Jesse Burkett LL practices	13799	Chandler Magnet School	Fields (Elementary)	Jesse Burkett
169	Chandler Magnet	6/29/2018	Soccer Practice (Chandler)	13629	Chandler Magnet School	Fields (Elementary)	Worcester Youth Soccer League
170	Chandler Magnet	6/30/2018	Soccer Games (Chandler Magnet)	13630	Chandler Magnet School	Fields (Elementary)	Worcester Youth Soccer League
171	Chandler Magnet	6/30/2018	Jesse Burkett LL practices	13799	Chandler Magnet School	Fields (Elementary)	Jesse Burkett
172	Chandler Magnet	7/2/2018	Jesse Burkett LL practices	13799	Chandler Magnet School	Fields (Elementary)	Jesse Burkett
173	Chandler Magnet	7/3/2018	Jesse Burkett LL practices	13799	Chandler Magnet School	Fields (Elementary)	Jesse Burkett
174	Chandler Magnet	7/4/2018	Jesse Burkett LL practices	13799	Chandler Magnet School	Fields (Elementary)	Jesse Burkett
175	Chandler Magnet	7/5/2018	Jesse Burkett LL practices	13799	Chandler Magnet School	Fields (Elementary)	Jesse Burkett
176	Chandler Magnet	7/6/2018	Jesse Burkett LL practices	13799	Chandler Magnet School	Fields (Elementary)	Jesse Burkett
177	Chandler Magnet	7/7/2018	Jesse Burkett LL practices	13799	Chandler Magnet School	Fields (Elementary)	Jesse Burkett

178	Chandler Magnet	7/9/2018	Jesse Burkett LL practices	13799	Chandler Magnet School	Fields (Elementary)	Jesse Burkett
179	Chandler Magnet	7/10/2018	Jesse Burkett LL practices	13799	Chandler Magnet School	Fields (Elementary)	Jesse Burkett
180	Chandler Magnet	7/10/2018	Camp Italia Retreat (Chandler Mag)	13885	Chandler Magnet School	Soccer Field	Camp Italia Retreat
181	Chandler Magnet	7/11/2018	Jesse Burkett LL practices	13799	Chandler Magnet School	Fields (Elementary)	Jesse Burkett
182	Chandler Magnet	7/12/2018	Jesse Burkett LL practices	13799	Chandler Magnet School	Fields (Elementary)	Jesse Burkett
183	Chandler Magnet	7/12/2018	Camp Italia Retreat (Chandler Mag)	13885	Chandler Magnet School	Soccer Field	Camp Italia Retreat
184	Chandler Magnet	7/13/2018	Jesse Burkett LL practices	13799	Chandler Magnet School	Fields (Elementary)	Jesse Burkett
185	Chandler Magnet	7/14/2018	Jesse Burkett LL practices	13799	Chandler Magnet School	Fields (Elementary)	Jesse Burkett
186	Chandler Magnet	7/16/2018	Jesse Burkett LL practices	13799	Chandler Magnet School	Fields (Elementary)	Jesse Burkett
187	Chandler Magnet	7/17/2018	Jesse Burkett LL practices	13799	Chandler Magnet School	Fields (Elementary)	Jesse Burkett
188	Chandler Magnet	7/18/2018	Jesse Burkett LL practices	13799	Chandler Magnet School	Fields (Elementary)	Jesse Burkett
189	Chandler Magnet	7/19/2018	Jesse Burkett LL practices	13799	Chandler Magnet School	Fields (Elementary)	Jesse Burkett
190	Chandler Magnet	7/20/2018	Jesse Burkett LL practices	13799	Chandler Magnet School	Fields (Elementary)	Jesse Burkett
191	Chandler Magnet	7/21/2018	Jesse Burkett LL practices	13799	Chandler Magnet School	Fields (Elementary)	Jesse Burkett
192	Chandler Magnet	7/23/2018	Jesse Burkett LL practices	13799	Chandler Magnet School	Fields (Elementary)	Jesse Burkett
193	Chandler Magnet	7/24/2018	Jesse Burkett LL practices	13799	Chandler Magnet School	Fields (Elementary)	Jesse Burkett
194	Chandler Magnet	7/25/2018	Jesse Burkett LL practices	13799	Chandler Magnet School	Fields (Elementary)	Jesse Burkett
195	Chandler Magnet	7/26/2018	Jesse Burkett LL practices	13799	Chandler Magnet School	Fields (Elementary)	Jesse Burkett
196	Chandler Magnet	7/27/2018	Jesse Burkett LL practices	13799	Chandler Magnet School	Fields (Elementary)	Jesse Burkett
197	Chandler Magnet	7/28/2018	Liberian Independence Day Program (Chandler Mag)	14202	Chandler Magnet School	Soccer Field	Liberian Association Of Worcester County
198	Chandler Magnet	7/28/2018	Jesse Burkett LL practices	13799	Chandler Magnet School	Fields (Elementary)	Jesse Burkett
199	Chandler Magnet	7/29/2018	Liberian Independence Day Program (Chandler Mag)	14202	Chandler Magnet School	Soccer Field	Liberian Association Of Worcester County

200	Chandler Magnet	7/30/2018	Jesse Burkett LL practices	13799	Chandler Magnet School	Fields (Elementary)	Jesse Burkett
201	Chandler Magnet	7/31/2018	Jesse Burkett LL practices	13799	Chandler Magnet School	Fields (Elementary)	Jesse Burkett
202	Chandler Magnet	8/6/2018	Soccer Coaching (Chandler Mag)	14340	Chandler Magnet School	Soccer Field	Simba Rising Stars
203	Chandler Magnet	8/8/2018	Soccer Coaching (Chandler Mag)	14340	Chandler Magnet School	Soccer Field	Simba Rising Stars
204	Chandler Magnet	8/10/2018	Soccer Coaching (Chandler Mag)	14340	Chandler Magnet School	Soccer Field	Simba Rising Stars
205	Chandler Magnet	8/13/2018	Soccer Coaching (Chandler Mag)	14340	Chandler Magnet School	Soccer Field	Simba Rising Stars
206	Chandler Magnet	8/15/2018	Soccer Coaching (Chandler Mag)	14340	Chandler Magnet School	Soccer Field	Simba Rising Stars
207	Chandler Magnet	8/17/2018	Soccer Coaching (Chandler Mag)	14340	Chandler Magnet School	Soccer Field	Simba Rising Stars
208	Chandler Magnet	8/20/2018	Soccer Practice (Chandler Mag)	14388	Chandler Magnet School	Fields (Elementary)	Worcester Youth Soccer League
209	Chandler Magnet	8/20/2018	Soccer Coaching (Chandler Mag)	14340	Chandler Magnet School	Soccer Field	Simba Rising Stars
210	Chandler Magnet	8/21/2018	Soccer Practice (Chandler Mag)	14388	Chandler Magnet School	Fields (Elementary)	Worcester Youth Soccer League
211	Chandler Magnet	8/21/2018	Soccer Practice (Chandler Mag)	14174	Chandler Magnet School	Fields (Elementary)	FC EAGLE UNITED
212	Chandler Magnet	8/22/2018	Soccer Practice (Chandler Mag)	14388	Chandler Magnet School	Fields (Elementary)	Worcester Youth Soccer League
213	Chandler Magnet	8/22/2018	Soccer Coaching (Chandler Mag)	14340	Chandler Magnet School	Soccer Field	Simba Rising Stars
214	Chandler Magnet	8/22/2018	Soccer Practice (Chandler Mag)	14174	Chandler Magnet School	Fields (Elementary)	FC EAGLE UNITED
215	Chandler Magnet	8/22/2018	Worcester Youth Flag Football (Chandler Mag)	14415	Chandler Magnet School	Fields (Elementary)	Worcester Youth Flag Football
216	Chandler Magnet	8/23/2018	Soccer Practice (Chandler Mag)	14388	Chandler Magnet School	Fields (Elementary)	Worcester Youth Soccer League
217	Chandler Magnet	8/23/2018	Soccer Practice (Chandler Mag)	14174	Chandler Magnet School	Fields (Elementary)	FC EAGLE UNITED
218	Chandler Magnet	8/24/2018	Soccer Practice (Chandler Mag)	14388	Chandler Magnet School	Fields (Elementary)	Worcester Youth Soccer League
219	Chandler Magnet	8/24/2018	Soccer Practice (Chandler Mag)	14174	Chandler Magnet School	Fields (Elementary)	FC EAGLE UNITED
220	Chandler Magnet	8/25/2018	Soccer games (Chandler Mag)	14389	Chandler Magnet School	Fields (Elementary)	Worcester Youth Soccer League
221	Chandler Magnet	8/26/2018	Soccer games (Chandler Mag)	14389	Chandler Magnet School	Fields (Elementary)	Worcester Youth Soccer League
222	Chandler Magnet	8/27/2018	Soccer Practice (Chandler Mag)	14388	Chandler Magnet School	Fields (Elementary)	Worcester Youth Soccer League



223	Chandler Magnet	8/28/2018	Soccer Practice (Chandler Mag)	14388	Chandler Magnet School	Fields (Elementary)	Worcester Youth Soccer League
224	Chandler Magnet	8/28/2018	Soccer Practice (Chandler Mag)	14174	Chandler Magnet School	Fields (Elementary)	FC EAGLE UNITED
225	Chandler Magnet	8/29/2018	Soccer Practice (Chandler Mag)	14388	Chandler Magnet School	Fields (Elementary)	Worcester Youth Soccer League
226	Chandler Magnet	8/29/2018	Soccer Practice (Chandler Mag)	14174	Chandler Magnet School	Fields (Elementary)	FC EAGLE UNITED
227	Chandler Magnet	8/29/2018	Worcester Youth Flag Football (Chandler Mag)	14415	Chandler Magnet School	Fields (Elementary)	Worcester Youth Flag Football
228	Chandler Magnet	8/30/2018	Soccer Practice (Chandler Mag)	14388	Chandler Magnet School	Fields (Elementary)	Worcester Youth Soccer League
229	Chandler Magnet	8/30/2018	Soccer Practice (Chandler Mag)	14174	Chandler Magnet School	Fields (Elementary)	FC EAGLE UNITED
230	Chandler Magnet	8/31/2018	Soccer Practice (Chandler Mag)	14388	Chandler Magnet School	Fields (Elementary)	Worcester Youth Soccer League
231	Chandler Magnet	8/31/2018	Soccer Practice (Chandler Mag)	14174	Chandler Magnet School	Fields (Elementary)	FC EAGLE UNITED
232	Chandler Magnet	9/1/2018	Soccer games (Chandler Mag)	14389	Chandler Magnet School	Fields (Elementary)	Worcester Youth Soccer League
233	Chandler Magnet	9/1/2018	Chandler Magnet Cleanup	14543	Chandler Magnet School	Fields (Elementary)	Chandler Magnet
234	Chandler Magnet	9/2/2018	Soccer games (Chandler Mag)	14389	Chandler Magnet School	Fields (Elementary)	Worcester Youth Soccer League
235	Chandler Magnet	9/3/2018	Chandler Magnet Cleanup	14543	Chandler Magnet School	Fields (Elementary)	Chandler Magnet
236	Chandler Magnet	9/3/2018	Soccer Practice (Chandler Mag)	14388	Chandler Magnet School	Fields (Elementary)	Worcester Youth Soccer League
237	Chandler Magnet	9/4/2018	Soccer Practice (Chandler Mag)	14388	Chandler Magnet School	Fields (Elementary)	Worcester Youth Soccer League
238	Chandler Magnet	9/4/2018	Soccer Practice (Chandler Mag)	14174	Chandler Magnet School	Fields (Elementary)	FC EAGLE UNITED
239	Chandler Magnet	9/5/2018	Soccer Practice (Chandler Mag)	14388	Chandler Magnet School	Fields (Elementary)	Worcester Youth Soccer League
240	Chandler Magnet	9/5/2018	Soccer Practice (Chandler Mag)	14174	Chandler Magnet School	Fields (Elementary)	FC EAGLE UNITED
241	Chandler Magnet	9/5/2018	Worcester Youth Flag Football (Chandler Mag)	14415	Chandler Magnet School	Fields (Elementary)	Worcester Youth Flag Football
242	Chandler Magnet	9/6/2018	Soccer Practice (Chandler Mag)	14388	Chandler Magnet School	Fields (Elementary)	Worcester Youth Soccer League
243	Chandler Magnet	9/6/2018	Soccer Practice (Chandler Mag)	14174	Chandler Magnet School	Fields (Elementary)	FC EAGLE UNITED
244	Chandler Magnet	9/7/2018	Soccer Practice (Chandler Mag)	14388	Chandler Magnet School	Fields (Elementary)	Worcester Youth Soccer League
245	Chandler Magnet	9/7/2018	Soccer Practice (Chandler Mag)	14174	Chandler Magnet School	Fields (Elementary)	FC EAGLE UNITED
246	Chandler Magnet	9/8/2018	Soccer games (Chandler Mag)	14389	Chandler Magnet School	Fields (Elementary)	Worcester Youth Soccer League
247	Chandler Magnet	9/9/2018	Soccer games (Chandler Mag)	14389	Chandler Magnet School	Fields (Elementary)	Worcester Youth Soccer League
248	Chandler Magnet	9/10/2018	Soccer Practice (Chandler Mag)	14388	Chandler Magnet School	Fields (Elementary)	Worcester Youth Soccer League

249	Chandler Magnet	9/11/2018	Soccer Practice (Chandler Mag)	14388	Chandler Magnet School	Fields (Elementary)	Worcester Youth Soccer League
250	Chandler Magnet	9/11/2018	Soccer Practice (Chandler Mag)	14174	Chandler Magnet School	Fields (Elementary)	FC EAGLE UNITED
251	Chandler Magnet	9/12/2018	Soccer Practice (Chandler Mag)	14388	Chandler Magnet School	Fields (Elementary)	Worcester Youth Soccer League
252	Chandler Magnet	9/12/2018	Soccer Practice (Chandler Mag)	14174	Chandler Magnet School	Fields (Elementary)	FC EAGLE UNITED
253	Chandler Magnet	9/12/2018	Worcester Youth Flag Football (Chandler Mag)	14415	Chandler Magnet School	Fields (Elementary)	Worcester Youth Flag Football
254	Chandler Magnet	9/13/2018	Soccer Practice (Chandler Mag)	14388	Chandler Magnet School	Fields (Elementary)	Worcester Youth Soccer League
255	Chandler Magnet	9/13/2018	Soccer Practice (Chandler Mag)	14174	Chandler Magnet School	Fields (Elementary)	FC EAGLE UNITED
256	Chandler Magnet	9/14/2018	Soccer Practice (Chandler Mag)	14388	Chandler Magnet School	Fields (Elementary)	Worcester Youth Soccer League
257	Chandler Magnet	9/14/2018	Soccer Practice (Chandler Mag)	14174	Chandler Magnet School	Fields (Elementary)	FC EAGLE UNITED
258	Chandler Magnet	9/15/2018	Soccer games (Chandler Mag)	14389	Chandler Magnet School	Fields (Elementary)	Worcester Youth Soccer League
259	Chandler Magnet	9/16/2018	Soccer games (Chandler Mag)	14389	Chandler Magnet School	Fields (Elementary)	Worcester Youth Soccer League
260	Chandler Magnet	9/17/2018	Soccer Practice (Chandler Mag)	14388	Chandler Magnet School	Fields (Elementary)	Worcester Youth Soccer League
261	Chandler Magnet	9/18/2018	Soccer Practice (Chandler Mag)	14388	Chandler Magnet School	Fields (Elementary)	Worcester Youth Soccer League
262	Chandler Magnet	9/18/2018	Soccer Practice (Chandler Mag)	14174	Chandler Magnet School	Fields (Elementary)	FC EAGLE UNITED
263	Chandler Magnet	9/19/2018	Soccer Practice (Chandler Mag)	14388	Chandler Magnet School	Fields (Elementary)	Worcester Youth Soccer League
264	Chandler Magnet	9/19/2018	Soccer Practice (Chandler Mag)	14174	Chandler Magnet School	Fields (Elementary)	FC EAGLE UNITED
265	Chandler Magnet	9/19/2018	Worcester Youth Flag Football (Chandler Mag)	14415	Chandler Magnet School	Fields (Elementary)	Worcester Youth Flag Football
266	Chandler Magnet	9/20/2018	Soccer Practice (Chandler Mag)	14388	Chandler Magnet School	Fields (Elementary)	Worcester Youth Soccer League
267	Chandler Magnet	9/20/2018	Soccer Practice (Chandler Mag)	14174	Chandler Magnet School	Fields (Elementary)	FC EAGLE UNITED
268	Chandler Magnet	9/21/2018	Soccer Practice (Chandler Mag)	14388	Chandler Magnet School	Fields (Elementary)	Worcester Youth Soccer League
269	Chandler Magnet	9/21/2018	Soccer Practice (Chandler Mag)	14174	Chandler Magnet School	Fields (Elementary)	FC EAGLE UNITED
270	Chandler Magnet	9/22/2018	Soccer games (Chandler Mag)	14389	Chandler Magnet School	Fields (Elementary)	Worcester Youth Soccer League
271	Chandler Magnet	9/23/2018	Soccer games (Chandler Mag)	14389	Chandler Magnet School	Fields (Elementary)	Worcester Youth Soccer League
272	Chandler Magnet	9/24/2018	Soccer Practice (Chandler Mag)	14388	Chandler Magnet School	Fields (Elementary)	Worcester Youth Soccer League
273	Chandler Magnet	9/25/2018	Soccer Practice (Chandler Mag)	14388	Chandler Magnet School	Fields (Elementary)	Worcester Youth Soccer League
274	Chandler Magnet	9/25/2018	Soccer Practice (Chandler Mag)	14174	Chandler Magnet School	Fields (Elementary)	FC EAGLE UNITED

275	Chandler Magnet	9/26/2018	Soccer Practice (Chandler Mag)	14388	Chandler Magnet School	Fields (Elementary)	Worcester Youth Soccer League
276	Chandler Magnet	9/26/2018	Soccer Practice (Chandler Mag)	14174	Chandler Magnet School	Fields (Elementary)	FC EAGLE UNITED
277	Chandler Magnet	9/26/2018	Worcester Youth Flag Football (Chandler Mag)	14415	Chandler Magnet School	Fields (Elementary)	Worcester Youth Flag Football
278	Chandler Magnet	9/27/2018	Soccer Practice (Chandler Mag)	14388	Chandler Magnet School	Fields (Elementary)	Worcester Youth Soccer League
279	Chandler Magnet	9/27/2018	Soccer Practice (Chandler Mag)	14174	Chandler Magnet School	Fields (Elementary)	FC EAGLE UNITED
280	Chandler Magnet	9/28/2018	Soccer Practice (Chandler Mag)	14388	Chandler Magnet School	Fields (Elementary)	Worcester Youth Soccer League
281	Chandler Magnet	9/28/2018	Soccer Practice (Chandler Mag)	14174	Chandler Magnet School	Fields (Elementary)	FC EAGLE UNITED
282	Chandler Magnet	9/29/2018	Soccer games (Chandler Mag)	14389	Chandler Magnet School	Fields (Elementary)	Worcester Youth Soccer League
283	Chandler Magnet	9/30/2018	Soccer games (Chandler Mag)	14389	Chandler Magnet School	Fields (Elementary)	Worcester Youth Soccer League
284	Chandler Magnet	10/1/2018	Soccer Practice (Chandler Mag)	14388	Chandler Magnet School	Fields (Elementary)	Worcester Youth Soccer League
285	Chandler Magnet	10/2/2018	Soccer Practice (Chandler Mag)	14388	Chandler Magnet School	Fields (Elementary)	Worcester Youth Soccer League
286	Chandler Magnet	10/2/2018	Soccer Practice (Chandler Mag)	14174	Chandler Magnet School	Fields (Elementary)	FC EAGLE UNITED
287	Chandler Magnet	10/3/2018	Soccer Practice (Chandler Mag)	14388	Chandler Magnet School	Fields (Elementary)	Worcester Youth Soccer League
288	Chandler Magnet	10/3/2018	Soccer Practice (Chandler Mag)	14174	Chandler Magnet School	Fields (Elementary)	FC EAGLE UNITED
289	Chandler Magnet	10/3/2018	Worcester Youth Flag Football (Chandler Mag)	14415	Chandler Magnet School	Fields (Elementary)	Worcester Youth Flag Football
290	Chandler Magnet	10/4/2018	Soccer Practice (Chandler Mag)	14388	Chandler Magnet School	Fields (Elementary)	Worcester Youth Soccer League
291	Chandler Magnet	10/4/2018	Soccer Practice (Chandler Mag)	14174	Chandler Magnet School	Fields (Elementary)	FC EAGLE UNITED
292	Chandler Magnet	10/5/2018	Soccer Practice (Chandler Mag)	14388	Chandler Magnet School	Fields (Elementary)	Worcester Youth Soccer League
293	Chandler Magnet	10/5/2018	Soccer Practice (Chandler Mag)	14174	Chandler Magnet School	Fields (Elementary)	FC EAGLE UNITED
294	Chandler Magnet	10/6/2018	Soccer games (Chandler Mag)	14389	Chandler Magnet School	Fields (Elementary)	Worcester Youth Soccer League
295	Chandler Magnet	10/7/2018	Soccer games (Chandler Mag)	14389	Chandler Magnet School	Fields (Elementary)	Worcester Youth Soccer League
296	Chandler Magnet	10/8/2018	Soccer Practice (Chandler Mag)	14388	Chandler Magnet School	Fields (Elementary)	Worcester Youth Soccer League
297	Chandler Magnet	10/9/2018	Soccer Practice (Chandler Mag)	14388	Chandler Magnet School	Fields (Elementary)	Worcester Youth Soccer League
298	Chandler Magnet	10/9/2018	Soccer Practice (Chandler Mag)	14174	Chandler Magnet School	Fields (Elementary)	FC EAGLE UNITED
299	Chandler Magnet	10/10/2018	Soccer Practice (Chandler Mag)	14388	Chandler Magnet School	Fields (Elementary)	Worcester Youth Soccer League



326	Chandler Magnet	10/25/2018	Soccer Practice (Chandler Mag)	14388	Chandler Magnet School	Fields (Elementary)	Worcester Youth Soccer League
327	Chandler Magnet	10/25/2018	Soccer Practice (Chandler Mag)	14174	Chandler Magnet School	Fields (Elementary)	FC EAGLE UNITED
328	Chandler Magnet	10/26/2018	Soccer Practice (Chandler Mag)	14388	Chandler Magnet School	Fields (Elementary)	Worcester Youth Soccer League
329	Chandler Magnet	10/26/2018	Soccer Practice (Chandler Mag)	14174	Chandler Magnet School	Fields (Elementary)	FC EAGLE UNITED
330	Chandler Magnet	10/27/2018	Soccer games (Chandler Mag)	14389	Chandler Magnet School	Fields (Elementary)	Worcester Youth Soccer League
331	Chandler Magnet	10/28/2018	Soccer games (Chandler Mag)	14389	Chandler Magnet School	Fields (Elementary)	Worcester Youth Soccer League
332	Chandler Magnet	10/29/2018	Soccer Practice (Chandler Mag)	14388	Chandler Magnet School	Fields (Elementary)	Worcester Youth Soccer League
333	Chandler Magnet	10/30/2018	Soccer Practice (Chandler Mag)	14388	Chandler Magnet School	Fields (Elementary)	Worcester Youth Soccer League
334	Chandler Magnet	10/30/2018	Soccer Practice (Chandler Mag)	14174	Chandler Magnet School	Fields (Elementary)	FC EAGLE UNITED
335	Chandler Magnet	10/31/2018	Soccer Practice (Chandler Mag)	14388	Chandler Magnet School	Fields (Elementary)	Worcester Youth Soccer League
336	Chandler Magnet	10/31/2018	Soccer Practice (Chandler Mag)	14174	Chandler Magnet School	Fields (Elementary)	FC EAGLE UNITED
337	Chandler Magnet	10/31/2018	Worcester Youth Flag Football (Chandler Mag)	14415	Chandler Magnet School	Fields (Elementary)	Worcester Youth Flag Football
338	Chandler Magnet	11/1/2018	Soccer Practice (Chandler Mag)	14388	Chandler Magnet School	Fields (Elementary)	Worcester Youth Soccer League
339	Chandler Magnet	11/1/2018	Soccer Practice (Chandler Mag)	14174	Chandler Magnet School	Fields (Elementary)	FC EAGLE UNITED
340	Chandler Magnet	11/2/2018	Soccer Practice (Chandler Mag)	14388	Chandler Magnet School	Fields (Elementary)	Worcester Youth Soccer League
341	Chandler Magnet	11/2/2018	Soccer Practice (Chandler Mag)	14174	Chandler Magnet School	Fields (Elementary)	FC EAGLE UNITED
342	Chandler Magnet	11/3/2018	Soccer games (Chandler Mag)	14389	Chandler Magnet School	Fields (Elementary)	Worcester Youth Soccer League
343	Chandler Magnet	11/4/2018	Soccer games (Chandler Mag)	14389	Chandler Magnet School	Fields (Elementary)	Worcester Youth Soccer League
344	Chandler Magnet	11/5/2018	Soccer Practice (Chandler Mag)	14388	Chandler Magnet School	Fields (Elementary)	Worcester Youth Soccer League
345	Chandler Magnet	11/6/2018	Soccer Practice (Chandler Mag)	14388	Chandler Magnet School	Fields (Elementary)	Worcester Youth Soccer League
346	Chandler Magnet	11/6/2018	Soccer Practice (Chandler Mag)	14174	Chandler Magnet School	Fields (Elementary)	FC EAGLE UNITED
347	Chandler Magnet	11/7/2018	Soccer Practice (Chandler Mag)	14388	Chandler Magnet School	Fields (Elementary)	Worcester Youth Soccer League
348	Chandler Magnet	11/7/2018	Soccer Practice (Chandler Mag)	14174	Chandler Magnet School	Fields (Elementary)	FC EAGLE UNITED
349	Chandler Magnet	11/8/2018	Soccer Practice (Chandler Mag)	14388	Chandler Magnet School	Fields (Elementary)	Worcester Youth Soccer League
350	Chandler Magnet	11/8/2018	Soccer Practice (Chandler Mag)	14174	Chandler Magnet School	Fields (Elementary)	FC EAGLE UNITED

351	Chandler Magnet	11/9/2018	Soccer Practice (Chandler Mag)	14388	Chandler Magnet School	Fields (Elementary)	Worcester Youth Soccer League
352	Chandler Magnet	11/9/2018	Soccer Practice (Chandler Mag)	14174	Chandler Magnet School	Fields (Elementary)	FC EAGLE UNITED
353	Chandler Magnet	11/10/2018	Soccer games (Chandler Mag)	14389	Chandler Magnet School	Fields (Elementary)	Worcester Youth Soccer League
354	Chandler Magnet	11/11/2018	Soccer games (Chandler Mag)	14389	Chandler Magnet School	Fields (Elementary)	Worcester Youth Soccer League
355	Chandler Magnet	11/12/2018	Soccer Practice (Chandler Mag)	14388	Chandler Magnet School	Fields (Elementary)	Worcester Youth Soccer League
356	Chandler Magnet	11/13/2018	Soccer Practice (Chandler Mag)	14388	Chandler Magnet School	Fields (Elementary)	Worcester Youth Soccer League
357	Chandler Magnet	11/13/2018	Soccer Practice (Chandler Mag)	14174	Chandler Magnet School	Fields (Elementary)	FC EAGLE UNITED
358	Chandler Magnet	11/14/2018	Soccer Practice (Chandler Mag)	14388	Chandler Magnet School	Fields (Elementary)	Worcester Youth Soccer League
359	Chandler Magnet	11/14/2018	Soccer Practice (Chandler Mag)	14174	Chandler Magnet School	Fields (Elementary)	FC EAGLE UNITED
360	Chandler Magnet	11/15/2018	Soccer Practice (Chandler Mag)	14388	Chandler Magnet School	Fields (Elementary)	Worcester Youth Soccer League
361	Chandler Magnet	11/15/2018	Soccer Practice (Chandler Mag)	14174	Chandler Magnet School	Fields (Elementary)	FC EAGLE UNITED
362	Chandler Magnet	11/16/2018	Soccer Practice (Chandler Mag)	14388	Chandler Magnet School	Fields (Elementary)	Worcester Youth Soccer League
363	Chandler Magnet	11/17/2018	Soccer games (Chandler Mag)	14389	Chandler Magnet School	Fields (Elementary)	Worcester Youth Soccer League
364	Chandler Magnet	11/18/2018	Soccer games (Chandler Mag)	14389	Chandler Magnet School	Fields (Elementary)	Worcester Youth Soccer League
365	Chandler Magnet	11/19/2018	Soccer Practice (Chandler Mag)	14388	Chandler Magnet School	Fields (Elementary)	Worcester Youth Soccer League
366	Chandler Magnet	11/24/2018	Soccer games (Chandler Mag)	14389	Chandler Magnet School	Fields (Elementary)	Worcester Youth Soccer League
367	Chandler Magnet	4/1/2019	Soccer Practice (Chandler Mag)	15709	Chandler Magnet School	Fields (Elementary)	Worcester Youth Soccer League
368	Chandler Magnet	4/1/2019	Soccer Practice (Chandler Mag)	15712	Chandler Magnet School	Soccer Field	Worcester Youth Soccer League
369	Chandler Magnet	4/2/2019	Soccer Practice (Chandler Mag)	15709	Chandler Magnet School	Fields (Elementary)	Worcester Youth Soccer League
370	Chandler Magnet	4/2/2019	Soccer Practice (Chandler Mag)	15712	Chandler Magnet School	Soccer Field	Worcester Youth Soccer League
371	Chandler Magnet	4/3/2019	Soccer Practice (Chandler Mag)	15709	Chandler Magnet School	Fields (Elementary)	Worcester Youth Soccer League
372	Chandler Magnet	4/3/2019	Soccer Practice (Chandler Mag)	15712	Chandler Magnet School	Soccer Field	Worcester Youth Soccer League
373	Chandler Magnet	4/4/2019	Soccer Practice (Chandler Mag)	15709	Chandler Magnet School	Fields (Elementary)	Worcester Youth Soccer League
374	Chandler Magnet	4/4/2019	Soccer Practice (Chandler Mag)	15712	Chandler Magnet School	Soccer Field	Worcester Youth Soccer League

375	Chandler Magnet	4/5/2019	Soccer Practice (Chandler Mag)	15709	Chandler Magnet School	Fields (Elementary)	Worcester Youth Soccer League
376	Chandler Magnet	4/5/2019	Soccer Practice (Chandler Mag)	15712	Chandler Magnet School	Soccer Field	Worcester Youth Soccer League
377	Chandler Magnet	4/6/2019	Soccer Games	15713	Chandler Magnet School	Soccer Field	Worcester Youth Soccer League
378	Chandler Magnet	4/6/2019	Soccer Practice (Chandler Mag)	15709	Chandler Magnet School	Fields (Elementary)	Worcester Youth Soccer League
379	Chandler Magnet	4/6/2019	Soccer Practice (Chandler Mag)	15712	Chandler Magnet School	Soccer Field	Worcester Youth Soccer League
380	Chandler Magnet	4/7/2019	Soccer Games	15713	Chandler Magnet School	Soccer Field	Worcester Youth Soccer League
381	Chandler Magnet	4/7/2019	Soccer Practice (Chandler Mag)	15709	Chandler Magnet School	Fields (Elementary)	Worcester Youth Soccer League
382	Chandler Magnet	4/7/2019	Soccer Practice (Chandler Mag)	15712	Chandler Magnet School	Soccer Field	Worcester Youth Soccer League
383	Chandler Magnet	4/8/2019	Soccer Practice (Chandler Mag)	15709	Chandler Magnet School	Fields (Elementary)	Worcester Youth Soccer League
384	Chandler Magnet	4/8/2019	Soccer Practice (Chandler Mag)	15712	Chandler Magnet School	Soccer Field	Worcester Youth Soccer League
385	Chandler Magnet	4/9/2019	Soccer Practice (Chandler Mag)	15709	Chandler Magnet School	Fields (Elementary)	Worcester Youth Soccer League
386	Chandler Magnet	4/9/2019	Soccer Practice (Chandler Mag)	15712	Chandler Magnet School	Soccer Field	Worcester Youth Soccer League
387	Chandler Magnet	4/10/2019	Soccer Practice (Chandler Mag)	15709	Chandler Magnet School	Fields (Elementary)	Worcester Youth Soccer League
388	Chandler Magnet	4/10/2019	Soccer Practice (Chandler Mag)	15712	Chandler Magnet School	Soccer Field	Worcester Youth Soccer League
389	Chandler Magnet	4/11/2019	Soccer Practice (Chandler Mag)	15709	Chandler Magnet School	Fields (Elementary)	Worcester Youth Soccer League
390	Chandler Magnet	4/11/2019	Soccer Practice (Chandler Mag)	15712	Chandler Magnet School	Soccer Field	Worcester Youth Soccer League
391	Chandler Magnet	4/12/2019	Soccer Practice (Chandler Mag)	15709	Chandler Magnet School	Fields (Elementary)	Worcester Youth Soccer League
392	Chandler Magnet	4/12/2019	Soccer Practice (Chandler Mag)	15712	Chandler Magnet School	Soccer Field	Worcester Youth Soccer League
393	Chandler Magnet	4/13/2019	Working for Worcester Playground Build (Chandler M	15975	Chandler Magnet School	Fields (Elementary)	Working for Worcester
394	Chandler Magnet	4/13/2019	Soccer Games	15713	Chandler Magnet School	Soccer Field	Worcester Youth Soccer League
395	Chandler Magnet	4/13/2019	Soccer Practice (Chandler Mag)	15709	Chandler Magnet School	Fields (Elementary)	Worcester Youth Soccer League
396	Chandler Magnet	4/13/2019	Soccer Practice (Chandler Mag)	15712	Chandler Magnet School	Soccer Field	Worcester Youth Soccer League
397	Chandler Magnet	4/14/2019	Soccer Games	15713	Chandler Magnet School	Soccer Field	Worcester Youth Soccer League
398	Chandler Magnet	4/14/2019	Soccer Practice (Chandler Mag)	15709	Chandler Magnet School	Fields (Elementary)	Worcester Youth Soccer League
399	Chandler Magnet	4/14/2019	Soccer Practice (Chandler Mag)	15712	Chandler Magnet School	Soccer Field	Worcester Youth Soccer League
400	Chandler Magnet	4/15/2019	Jesse Burkett LL Practices (Chandler Mag)	15908	Chandler Magnet School	Fields (Elementary)	Jesse Burkett Little League
401	Chandler Magnet	4/15/2019	Soccer Practice (Chandler Mag)	15709	Chandler Magnet School	Fields (Elementary)	Worcester Youth Soccer League
402	Chandler Magnet	4/15/2019	Soccer Practice (Chandler Mag)	15712	Chandler Magnet School	Soccer Field	Worcester Youth Soccer League

















613	Chandler Magnet	6/25/2019	Jesse Burkett LL Practices (Chandler Mag)	15908	Chandler Magnet School	Fields (Elementary)	Jesse Burkett Little League
614	Chandler Magnet	6/25/2019	Soccer Practice (Chandler Mag)	15709	Chandler Magnet School	Fields (Elementary)	Worcester Youth Soccer League
615	Chandler Magnet	6/25/2019	Soccer Practice (Chandler Mag)	15712	Chandler Magnet School	Soccer Field	Worcester Youth Soccer League
616	Chandler Magnet	6/26/2019	Jesse Burkett LL Practices (Chandler Mag)	15908	Chandler Magnet School	Fields (Elementary)	Jesse Burkett Little League
617	Chandler Magnet	6/26/2019	Soccer Practice (Chandler Mag)	15709	Chandler Magnet School	Fields (Elementary)	Worcester Youth Soccer League
618	Chandler Magnet	6/26/2019	Soccer Practice (Chandler Mag)	15712	Chandler Magnet School	Soccer Field	Worcester Youth Soccer League
619	Chandler Magnet	6/27/2019	Jesse Burkett LL Practices (Chandler Mag)	15908	Chandler Magnet School	Fields (Elementary)	Jesse Burkett Little League
620	Chandler Magnet	6/27/2019	Soccer Practice (Chandler Mag)	15709	Chandler Magnet School	Fields (Elementary)	Worcester Youth Soccer League
621	Chandler Magnet	6/27/2019	Soccer Practice (Chandler Mag)	15712	Chandler Magnet School	Soccer Field	Worcester Youth Soccer League
622	Chandler Magnet	6/28/2019	Jesse Burkett LL Practices (Chandler Mag)	15908	Chandler Magnet School	Fields (Elementary)	Jesse Burkett Little League
623	Chandler Magnet	6/28/2019	Soccer Practice (Chandler Mag)	15709	Chandler Magnet School	Fields (Elementary)	Worcester Youth Soccer League
624	Chandler Magnet	6/28/2019	Soccer Practice (Chandler Mag)	15712	Chandler Magnet School	Soccer Field	Worcester Youth Soccer League
625	Chandler Magnet	6/29/2019	Soccer Games	15713	Chandler Magnet School	Soccer Field	Worcester Youth Soccer League
626	Chandler Magnet	6/30/2019	Soccer Games	15713	Chandler Magnet School	Soccer Field	Worcester Youth Soccer League
627	Chandler Magnet	7/10/2019	Soccer practice (Chandler Mag)	16515	Chandler Magnet School	Soccer Field	Middle TN Soccer Alliance
628	Chandler Magnet	7/27/2019	INDEPENDENCE DAY CELEBRATION (Chandler Mag)	16543	Chandler Magnet School	Fields (Elementary)	Liberian Association Of Worcester County
629	Chandler Magnet	7/27/2019	INDEPENDENCE DAY CELEBRATION	16544	Chandler Magnet School	Fields (Elementary)	Liberian Association Of Worcester County
630	Chandler Magnet	7/28/2019	INDEPENDENCE DAY CELEBRATION (Chandler Mag)	16543	Chandler Magnet School	Fields (Elementary)	Liberian Association Of Worcester County
631	Chandler Magnet	7/28/2019	INDEPENDENCE DAY CELEBRATION	16544	Chandler Magnet School	Fields (Elementary)	Liberian Association Of Worcester County
632	Chandler Magnet	8/3/2019	Ecuadorian Community Independence Day (Chan Mag)	16640	Chandler Magnet School	Fields (Elementary)	Ecuadorian Community
633	Chandler Magnet	8/24/2019	LIBERIAN ASSOCIATION OF WORCESTER COUNTY- Chan Mag	16547	Chandler Magnet School	Fields (Elementary)	Liberian Association Of Worcester County
634	Chandler Magnet	8/25/2019	LIBERIAN ASSOCIATION OF WORCESTER COUNTY- Chan Mag	16547	Chandler Magnet School	Fields (Elementary)	Liberian Association Of Worcester County
635	Chandler Magnet	8/26/2019	WYSL Game Times (Chandler Mag)	16821	Chandler Magnet School	Fields (Elementary)	Worcester Youth Soccer League
636	Chandler Magnet	8/26/2019	WYSL Practice (Chandler Mag)	16820	Chandler Magnet School	Fields (Elementary)	Worcester Youth Soccer League
637	Chandler Magnet	8/27/2019	WYSL Game Times (Chandler Mag)	16821	Chandler Magnet School	Fields (Elementary)	Worcester Youth Soccer League



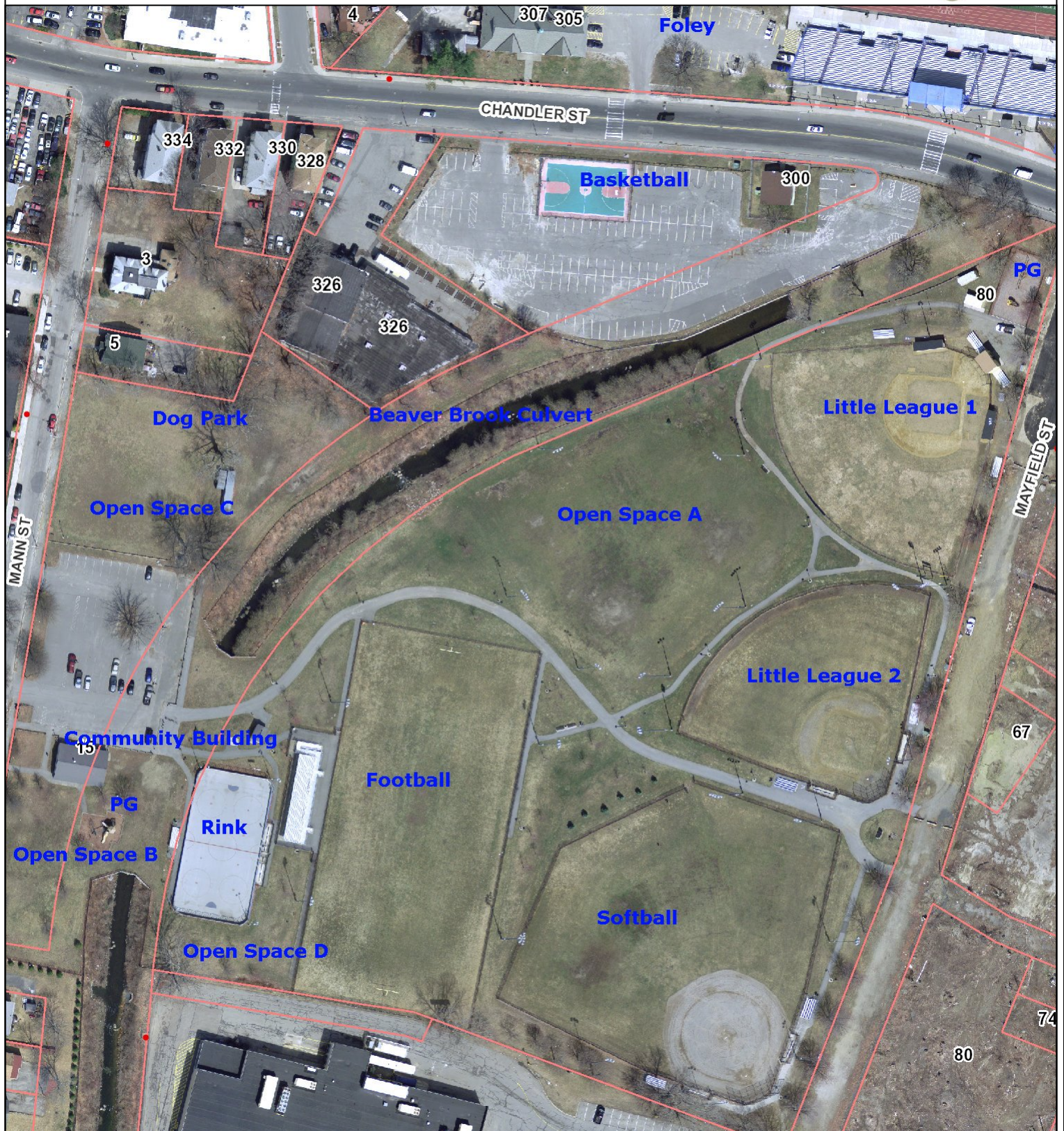






726	Chandler Magnet	9/29/2019	WYSL Game Times (Chandler Mag)	16821	Chandler Magnet School	Fields (Elementary)	Worcester Youth Soccer League
727	Chandler Magnet	9/29/2019	WYSL Practice (Chandler Mag)	16820	Chandler Magnet School	Fields (Elementary)	Worcester Youth Soccer League
728	Chandler Magnet	9/30/2019	WYSL Game Times (Chandler Mag)	16821	Chandler Magnet School	Fields (Elementary)	Worcester Youth Soccer League
729	Chandler Magnet	9/30/2019	WYSL Practice (Chandler Mag)	16820	Chandler Magnet School	Fields (Elementary)	Worcester Youth Soccer League
730	Chandler Magnet	9/30/2019	Worcester Youth Flag Football (Chandler Mag)	16874	Chandler Magnet School	Fields (Elementary)	Worcester Youth Flag Football
731	Chandler Magnet	10/1/2019	WYSL Game Times (Chandler Mag)	16821	Chandler Magnet School	Fields (Elementary)	Worcester Youth Soccer League
732	Chandler Magnet	10/1/2019	WYSL Practice (Chandler Mag)	16820	Chandler Magnet School	Fields (Elementary)	Worcester Youth Soccer League
733	Chandler Magnet	10/1/2019	Worcester Youth Flag Football (Chandler Mag)	16874	Chandler Magnet School	Fields (Elementary)	Worcester Youth Flag Football
734	Chandler Magnet	10/2/2019	WYSL Game Times (Chandler Mag)	16821	Chandler Magnet School	Fields (Elementary)	Worcester Youth Soccer League
735	Chandler Magnet	10/2/2019	WYSL Practice (Chandler Mag)	16820	Chandler Magnet School	Fields (Elementary)	Worcester Youth Soccer League
736	Chandler Magnet	10/2/2019	Worcester Youth Flag Football (Chandler Mag)	16874	Chandler Magnet School	Fields (Elementary)	Worcester Youth Flag Football
737	Chandler Magnet	10/3/2019	WYSL Game Times (Chandler Mag)	16821	Chandler Magnet School	Fields (Elementary)	Worcester Youth Soccer League
738	Chandler Magnet	10/3/2019	WYSL Practice (Chandler Mag)	16820	Chandler Magnet School	Fields (Elementary)	Worcester Youth Soccer League
739	Chandler Magnet	10/3/2019	Worcester Youth Flag Football (Chandler Mag)	16874	Chandler Magnet School	Fields (Elementary)	Worcester Youth Flag Football
740	Chandler Magnet	10/4/2019	WYSL Game Times (Chandler Mag)	16821	Chandler Magnet School	Fields (Elementary)	Worcester Youth Soccer League
741	Chandler Magnet	10/4/2019	WYSL Practice (Chandler Mag)	16820	Chandler Magnet School	Fields (Elementary)	Worcester Youth Soccer League
742	Chandler Magnet	10/4/2019	Worcester Youth Flag Football (Chandler Mag)	16874	Chandler Magnet School	Fields (Elementary)	Worcester Youth Flag Football

# Beaver Brook Park 2



**DATA SOURCES:**  
 Basemap data: City of Worcester, MA Geographic Information System  
 Original Data - Digitized at 1:480 scale (Data true resolution: 1 inch = 40 feet).  
 Updated Using Spring 2003 Photography at 1 inch = 100 feet  
 Further Updates Using City of Worcester Information  
 Property Details: City of Worcester, MA Assessing Division

- Hydrants
- ▭ Parcels
- ▭ City

**COORDINATE SYSTEM:**  
 All map data is in the Massachusetts State Plane Coordinate system,  
 North American Datum of 1983, Massachusetts Mainland Zone (4151).  
 Units are measured in Feet.

**DISCLAIMER:**  
 Considerable effort has been made to ensure the accuracy, correctness  
 and timeliness of data presented; however, this information is only as  
 accurate as its sources and may not reflect the most current information.  
 This map is a graphical representation of information for tax administration  
 purposes only and does not represent a professional survey. The City of  
 Worcester assumes no liability for any errors, omissions or inaccuracies  
 and makes no warranty, representation or guaranty of any kind as to the  
 content or for any decisions made or actions taken or not taken by the  
 user based upon any information provided on this map.



# CITY OF WORCESTER

## DEPARTMENT OF PUBLIC WORKS AND PARKS

Parks, Recreation and Cemetery Division 50 Skyline Drive Worcester, MA 01605-2898

Paul J. Moosey, P.E.  
Commissioner



Robert C. Antonelli, Jr., CPRP  
Assistant Commissioner

(508) 799-1190  
(508) 799-1293 FAX

Edward M. Augustus, Jr., City Manager

---

### **Beaver Brook Little League Field #1 & #2**

#### **Beaver Brook Open Spaces A, B, C & D**

Ted Williams:

April 1<sup>st</sup> through August 31<sup>st</sup>  
Sunday through Saturday  
8:00 AM to 10:00 PM

### **Beaver Brook Football Field**

#### **Beaver Brook Open Spaces A, B, C & D**

Worcester Vikings Youth Football:

August 1<sup>st</sup> through December 31<sup>st</sup>  
Sunday through Saturday  
8:00 AM to 10:00 PM

### **Beaver Brook Football Field**

Field Maintenance

January 1<sup>st</sup> through July 31<sup>st</sup>  
Sunday through Saturday  
8:00 AM to 10:00 PM

### **Beaver Brook Basketball Court**

Worcester PAAL – Youth Camps:

May through August  
Tuesdays, Wednesdays & Thursdays  
4:30 PM – 8:30 PM

Skyhawks Youth camp:

One week in August

### **Beaver Brook Hockey Rink**

Worcester Renegades Youth Street Hockey:

May through November 30<sup>th</sup>  
Monday – Friday – 4:00 PM – 10:00 PM  
Saturdays & Sundays – 9:00 AM – 1:00 PM

**Beaver Brook Softball Field**  
Worcester Public Schools

April 1<sup>st</sup> through Mid-June  
Monday through Friday  
2:00 PM – 6:00 PM

Worcester Healthcare Adult League

May 1<sup>st</sup> through September 1<sup>st</sup>  
Mondays & Tuesdays  
6:00 PM – 10:00 PM

Central Mass Adult Softball

May 1<sup>st</sup> through September 1<sup>st</sup>  
Wednesdays & Thursdays  
6:00 PM – 10:00 PM

Latin Adult Softball League

May 1<sup>st</sup> through September 1<sup>st</sup>  
Saturdays  
11:00 AM - 6:00 PM

Central Mass Adult Softball West

May 1<sup>st</sup> through end of September  
Sundays  
8:00 AM – 12:00 PM

Worcester Vikings Youth Football:

August 1<sup>st</sup> through August 31<sup>st</sup>  
Fridays  
5:30 PM to 8:30 PM

September 1<sup>st</sup> through December 31<sup>st</sup>  
Tuesday through Friday  
5:30 PM to 8:30 PM

**Beaver Brook Parking Lot**  
Worcester Public Schools

September 1<sup>st</sup> through November 30<sup>th</sup>  
Fridays, Saturdays & other days as needed  
Games at Foley

Worcester Farmer Market

June 1<sup>st</sup> through November 1<sup>st</sup>  
Monday & Fridays  
8:00 AM to 1:00 PM

# CITY OF WORCESTER

## DEPARTMENT OF PUBLIC WORKS AND PARKS

Parks, Recreation and Cemetery Division 50 Skyline Drive Worcester, MA 01605-2898

Paul J. Moosey, P.E.  
Commissioner



Robert C. Antonelli, Jr., CPRP  
Assistant Commissioner

(508) 799-1190  
(508) 799-1293 FAX

Edward M. Augustus, Jr., City Manager

---

### **Newton Hill Tennis Courts 1, 2, 3 & 4 Spaces A, B, C & D**

Worcester Public Schools

April 1<sup>st</sup> through Mid-June  
Monday through Friday  
2:00 PM – 6:00 PM

Tenacity

July 1<sup>st</sup> through August 31<sup>st</sup>  
Monday through Friday  
9:00 AM – 4:00 PM

Open Public Play

April 1<sup>st</sup> through October 31<sup>st</sup>  
Sunday through Saturday  
Dawn – 10:00 PM (or outside above permits)

### **Newton Hill Basketball Court**

Basketball League

June 1<sup>st</sup> through End of August  
Monday, Wednesdays & Thursdays  
5:00 PM – 10:00 PM

Open Public Play

April 1<sup>st</sup> through October 31<sup>st</sup>  
Sunday through Saturday  
Dawn – 10:00 PM (or outside above permits)

# Duffy Field 2



**DATA SOURCES:**  
 Basemap date: City of Worcester, MA Geographic Information System  
 Original Data - Digitized at 1:480 scale (Data true resolution: 1 inch = 40 feet).  
 Updated Using Spring 2003 Photography at 1 inch = 100 feet  
 Further Updates Using City of Worcester Information  
 Property Details: City of Worcester, MA Assessing Division

- Hydrants
- ▭ Parcels
- ▭ City

**COORDINATE SYSTEM:**  
 All map data is in the Massachusetts State Plane Coordinate system,  
 North American Datum of 1983, Massachusetts Mainland Zone (4151).  
 Units are measured in Feet.

**DISCLAIMER:**  
 Considerable effort has been made to ensure the accuracy, correctness  
 and timeliness of data presented; however, this information is only as  
 accurate as its sources and may not reflect the most current information.  
 This map is a graphical representation of information for tax administration  
 purposes only and does not represent a professional survey. The City of  
 Worcester assumes no liability for any errors, omissions or inaccuracies  
 and makes no warranty, representation or guaranty of any kind as to the  
 content or for any decisions made or actions taken or not taken by the  
 user based upon any information provided on this map.





# Duffy Field



**DATA SOURCES:**  
 Base map data: City of Worcester, MA Geographic Information System  
 Original Data - Digitized at 1:480 scale (Data true resolution: 1 inch = 40 feet).  
 Updated Using Spring 2003 Photography at 1 inch = 100 feet  
 Further Updates Using City of Worcester Information  
 Property Details: City of Worcester, MA Assessing Division

- Hydrants
- ▭ Parcels
- City

**COORDINATE SYSTEM:**  
 All map data is in the Massachusetts State Plane Coordinate system,  
 North American Datum of 1983, Massachusetts Mainland Zone (4151).  
 Units are measured in Feet.

**DISCLAIMER:**  
 Considerable effort has been made to ensure the accuracy, correctness and timeliness of data presented; however, this information is only as accurate as its sources and may not reflect the most current information. This map is a graphical representation of information for tax administration purposes only and does not represent a professional survey. The City of Worcester assumes no liability for any errors, omissions or inaccuracies and makes no warranty, representation or guaranty of any kind as to the content or for any decisions made or actions taken or not taken by the user based upon any information provided on this map.

# CITY OF WORCESTER

## DEPARTMENT OF PUBLIC WORKS AND PARKS

Parks, Recreation and Cemetery Division 50 Skyline Drive Worcester, MA 01605-2898

Paul J. Moosey, P.E.  
Commissioner



Robert C. Antonelli, Jr., CPRP  
Assistant Commissioner

(508) 799-1190  
(508) 799-1293 FAX

Edward M. Augustus, Jr., City Manager

---

### Duffy/Wetherall Estate

### Multipurpose field

Jesse Burkett Little League

April 1<sup>st</sup> through September 1<sup>st</sup>

Sunday through Saturday

8:00 AM – 8:00 PM

Greendale Youth Flag Football

September 1<sup>st</sup> through December 1<sup>st</sup>

Monday through Friday

4:00 PM – 8:00 PM

ATTENDEES:

- **Maureen Binienda** | Superintendent | Worcester Public Schools
- **Sally Maloney** | Principal | Doherty Memorial High School
- **John Staley** | Assistant Principal | DMHS
- **Eugene Caruso** | OPM | Tishman AECOM
- **Rob Para Jr.** | Project Architect | LPA|A
- **Chris Lee** | Project Manager | LPA|A
- **Christina Bazelmans** | Assistant Project Architect | LPA|A

Notes:

- Chapter 74 Pathways:
  - Cosmetology
  - Culinary Arts
  - Early Education & Care
  - Engineering – Project Lead The Way
  - Environmental Science & Technology
  - Health Assistant
  - Marketing
  - Visual Design
- Non-Chapter 74 Pathways:
  - Construction Craft Laborer
  - Electronics / Robotics
  - Woodworking Technology
- BMC Durfee High School is currently in the midst of a phased-occupied construction project with the existing school will remain functional and occupied throughout construction.
  - The town is renovating the pool and auditorium (separate from the MSBA project) for community use
- Construction Craft Laborer program
  - Currently a Non-Chapter 74 Career Pathway
  - The school is seeking Chapter 74 designation in the new school
  - Strong partnership with the New England Laborers Cooperation Trust

- Welding outside with Hopkinton Union reps in order to meet strand requirements
- 2 Teachers for 90 students total
- Schedule cross over with other disciplines to achieve the required 900 hours
- The CCL space in the new school will be the size of both existing shops combined







<b>School:</b>	<b>Medford Vocational Technical High School (MVTHS)</b>	<b>Date: Friday Oct. 18, 2019</b>
<b>Location:</b>	489 Winthrop Street Medford MA	
<b>Attendees:</b>	Maureen Binienda, Superintendent WPS Sally Malone, Principal DMHS John Staley, Asst. Principal DHMS Katie Crockett, LPA Eugene Caruso, TCCMA Chad Fallon, Principal/Director, MVTHS	
<b>Subject: School tour – Medford Vocational Technical High School</b>		
<p><b>General Impressions and Notes:</b></p> <ul style="list-style-type: none"> <li>• Vocational HS connected to the regular Medford HS</li> <li>• 570 students in the VoTech school</li> <li>• The Chapter 74 program spaces in general were large spaces</li> <li>• <b><u>ROBOTICS</u></b> – the CCL students are constructing new Robotics spaces in the lower level of the school.</li> <li>• Chad sold many items on the Municibid site.</li> <li>• Three spaces are being built for the robotics; manufacturing, robotics/engineering and computer lab/lecture classroom.</li> <li>• Existing Robotics is located in a standard type classroom setting. Computers are setup on tables around the perimeter of the room. Two computers per station along with soldering equipment, an oscilloscope and power supply are provided.</li> <li>• Chairs with arm table are provided in the middle of the classroom for lectures.</li> <li>• Program focus on software, programming, electronics and mechanics.</li> <li>• We were shown several projects the students built such as a digital clock and bus route tracker.</li> <li>• Room had ceiling fans as well.</li> <li>• There was also a second classroom for the robotics area in addition to two storage rooms.</li> <li>• One stores room was accessible to students that had well-organized bins, tools, motors, crimping tools, etc. for students to use in their projects.</li> <li>• The second classroom housed several pieces of heavy equipment.</li> <li>• Program also includes 3D and 2D printers, Circuit board cutter and cable hanger storage.</li> </ul>		

- **CONSTRUCTION CRAFT LABOR (CCL)** – program has been operational since 2006.
- This is a very large open area (approx. 80’x80’) with high ceilings. Located at the exterior with an overhead door to the outside.
- Program is focused on carpentry, landscaping and concretes works. No plumbing or welding.
- Local 22 out of Hopkinton provides off site training for heavy equipment.
- There was a vertical table saw set up along one wall.
- Included in the area of the CCL space are storage rooms, student lockers, a classroom and staff office. Above the rooms is a second level storage space.
- Along the exterior wall are CMU dividers that provide storage for sand, stone, bricks, CMU and bags of cement.
- The school has a budget of \$7,800 per year for supplies.
- There is 38 students plus freshmen, and 2 instructors in the CCL program.
- **PROGRAM AND WEB DEVELOPMENT** – this is the 4<sup>th</sup> year in the school being offered.
- The program is located in a standard classroom setting with computers on the tables.
- The students learn JAVA and they have a wide range of ability and motivation.
- Opportunity to take online courses with Kahn Academy.
- Python text language is used?
- Microsoft is bringing in computer science to the classroom.
- Teals Program being offered and is a good way for students to interact with professionals.
- Students also work with City officials on the City website.
- Developing a Help Desk and creating web site for school store.
- Students work on a project and at the year-end give a presentation.
- **BIOTECHNOLOGY** – This program was located in a general classroom.
- They are operating a hydronic plant growing area that works in conjunction with a fish pool adjacent to it. The Robotics class designed and built an automatic fish food feeder.
- Additionally, the Biotech students work on growing cancer cells and forensic science issues.
- **BUSINESS MARKETING** - School store managed through the Business program. Store manager is an adult who can cover during school hours when students are not available. Store is located at the Main HS lobby entry.



### Feasibility Study PSR

#### ATTENDEES:

- **Sally Maloney** | Principal | Doherty Memorial High School
- **John Staley** | Assistant Principal | DMHS
- **Christina Bazelmans** | Assistant Project Architect | LPA|A

#### Notes:

- This RI Charter School facility supports the Construction Career Academy and the World of Work program, which has a total enrollment of 170.
- The curriculum changes based on labor needs, but focuses heavily on heavy and highway construction skills, including
  - Bridge Construction
  - Asphalt
  - Welding
  - Scaffolding
  - Crane Signaling
  - Line & Grade
  - Utility work
  - Demolition
  - Concrete
- No carpentry, electrical or plumbing is taught due to labor union restrictions.
- Union representatives are the teachers, which is allowed in RI, but not yet in MA
- NEL CPS has 2.5 instructors, and tries to maintain a low student teacher ratio when in the shop (less than 1:15)
- Shop time is different for each grade level
  - 9<sup>th</sup> and 10<sup>th</sup> Grades spend the majority of their time in the related theory classroom
  - 11<sup>th</sup> Grade spends one period per day in the shop, all year long
  - 12<sup>th</sup> grade spends 3 periods per day in the shop each day, rating A and B
- Shop space has majority dirt/gravel floor (does not need to be deeper than – 6’ in a new facility).
- Two large projects must be able to be construction simultaneously, and are in progress for several weeks prior to demolition.

### Feasibility Study PSR

- Large overhead door must allow a cement truck to enter (50% of curriculum is concrete work)
- Scaffolding, demolition and crane signaling occur outside the shop, weather permitting.
- A John Deer Skid Steer with backhoe attachment is an essential piece of equipment for the program.
- The Principal recommends a passenger van or mini bus to take students off site to work on construction projects in the community.
- 2 welding stations are adequate.
- Significant storage for tools is required, the students built a small interior shed for storage.
- The facility is not accessible to a student in a wheel chair.